

LAVATEC

Laundry Technology GmbH

SPARE PARTS LIST

**L A V A D R Y
M O D E L L E**

FL 601

FL 602

FL 612

FL 613

FL 623

FL 633



**Serial N°.
Wiring Diagram**

LAVATEC
Laundry Technology GmbH
Wannenäckerstraße 53
D – 74078 Heilbronn
Telefon 0 71 31 / 29 80
www.lavatec-laundry.de

ET-FL_601ff-V13.01.07_GB

9. SPARE PARTS LIST

ORDERING SPARE PARTS

When ordering spare parts, please include the following information with your order:

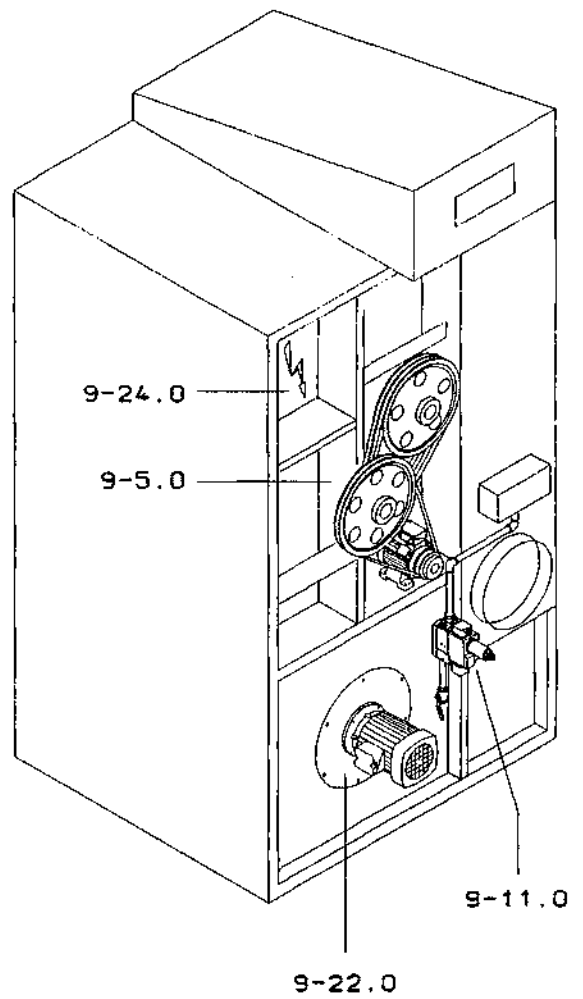
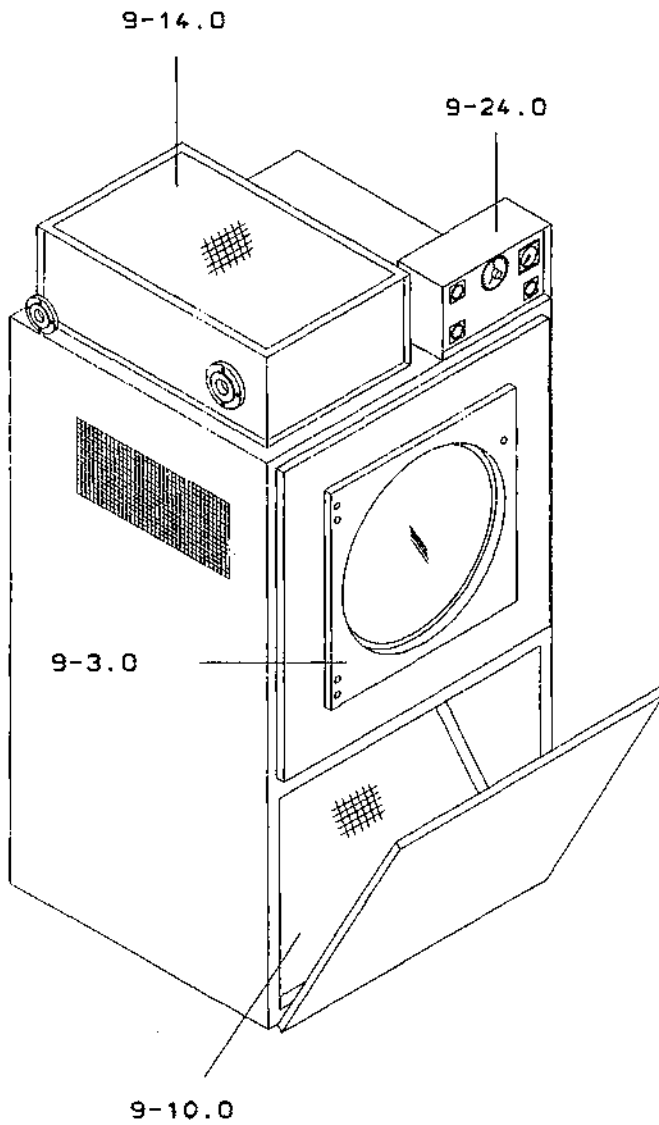
1. Model and serial number of the equipment (located on the name plate).
2. Part number, part name, and quantity required. Please use this spare parts list to facilitate ordering.
3. When ordering electrical motors, please include complete name plate data, motor manufacturer, and wiring diagram number.

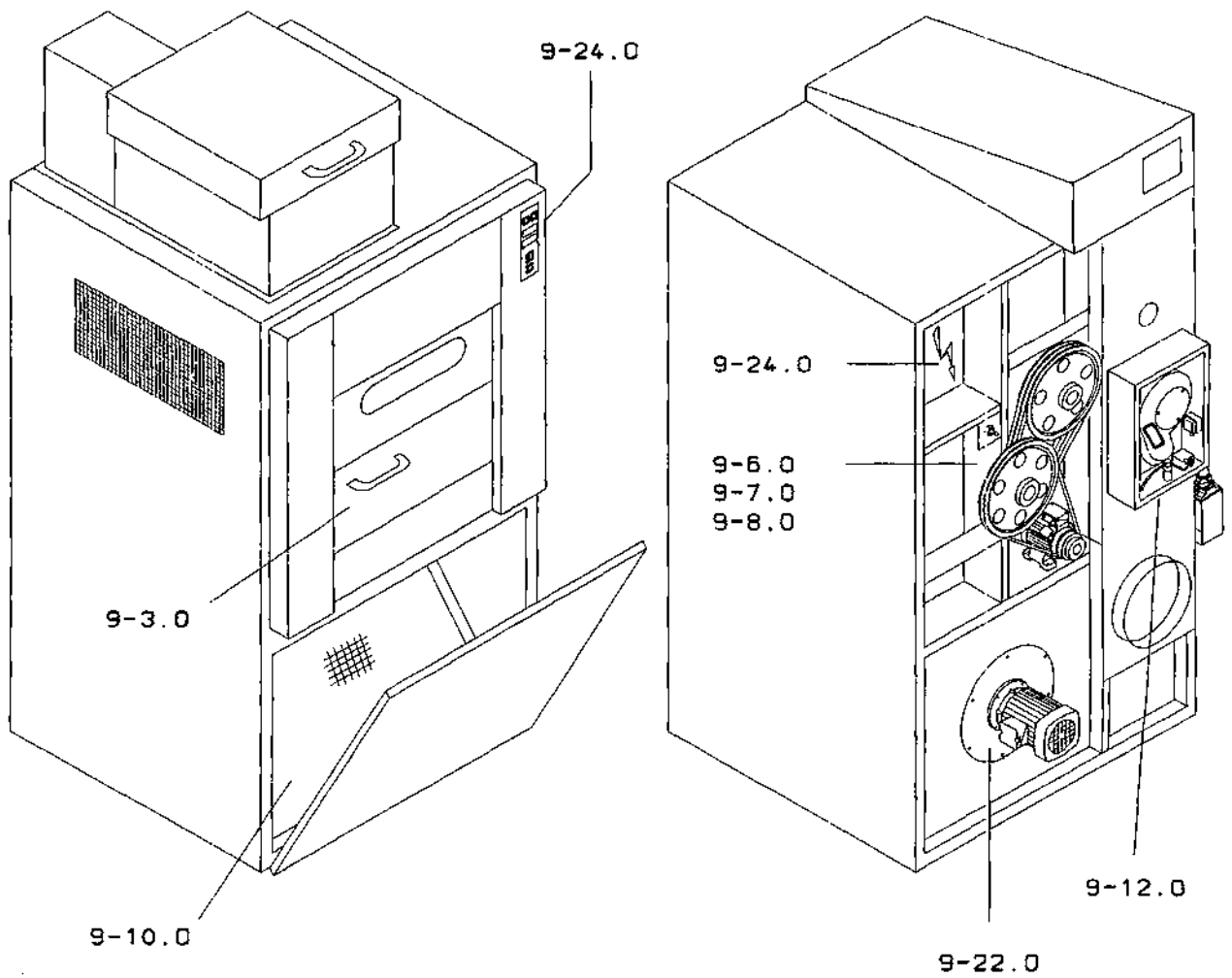
Our service and parts department is staffed with specially trained personnel to assist you with your needs. Please do not hesitate to call if we can be of any assistance.

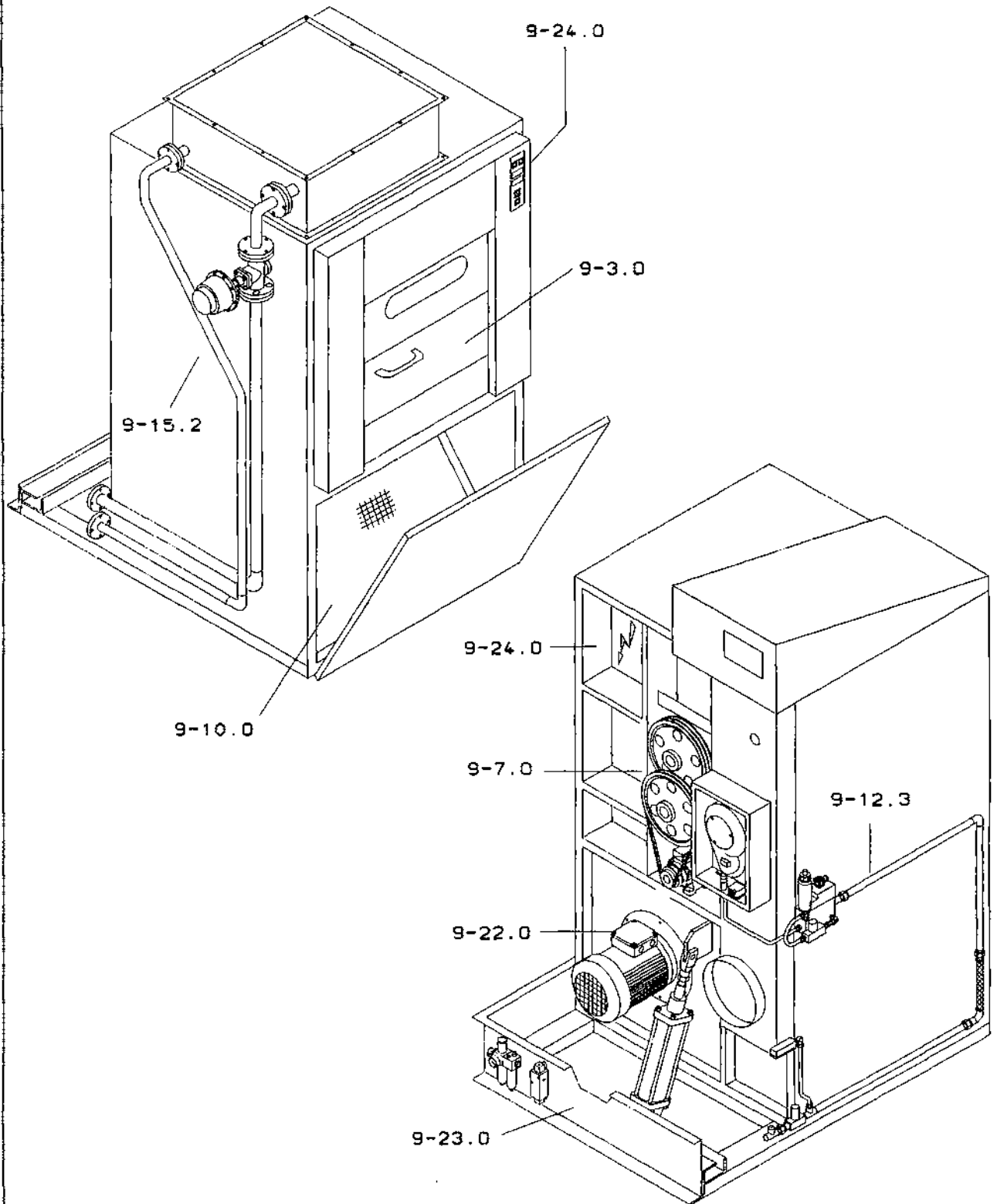
SUBJECT TO CHANGES WITHOUT NOTIFICATION

9.1. CONTENTS

		Page
Contents		9-0.1
Overview	Type 601-602	9-1.0
Overview	Type 612-633	9-2.0
Overview Tilt Version	Type 623-633	9-2.1
Loading Door	Type 600-633	9-3.0
Free		9-4.0
Drum Drive	Type 600	9-5.0
Drum Drive	Type 610	9-6.0
Drum Drive	Type 623	9-7.0
Drum Drive	Type 633	9-8.0
Drum Suspension	Type 600-633	9-9.0
Lint Screen	Type 600-633	9-10.0
Gas Heating	Type 601-602	9-11.0
Gas Heating	Type 612-633	9-12.0
Gas Assembly Tilt Version	Type 623-633	9-12.3
Free		9-13.0
Steam Heating	Type 600-623	9-14.0
Steam Heating	Type 633	9-15.0
Steam Pipes Tilt Version	Type 623-633	9-15.2
Electric Heating	Type 600-633	9-16.0
Free		9-17.0
Recycling Cylinder	Type 623-633	9-18.0
Make-up Air Flap	Type 600-633	9-19.0
Recycling Flap Steam	Type 612-613	9-20.0
Free		9-21.0
Blower Assembly	Type 600-633	9-22.0
Tilt Assembly	Type 623-633	9-23.0
Electrical Components	Type 600-633	9-24.1
9803	Type 600-633	9-0.1





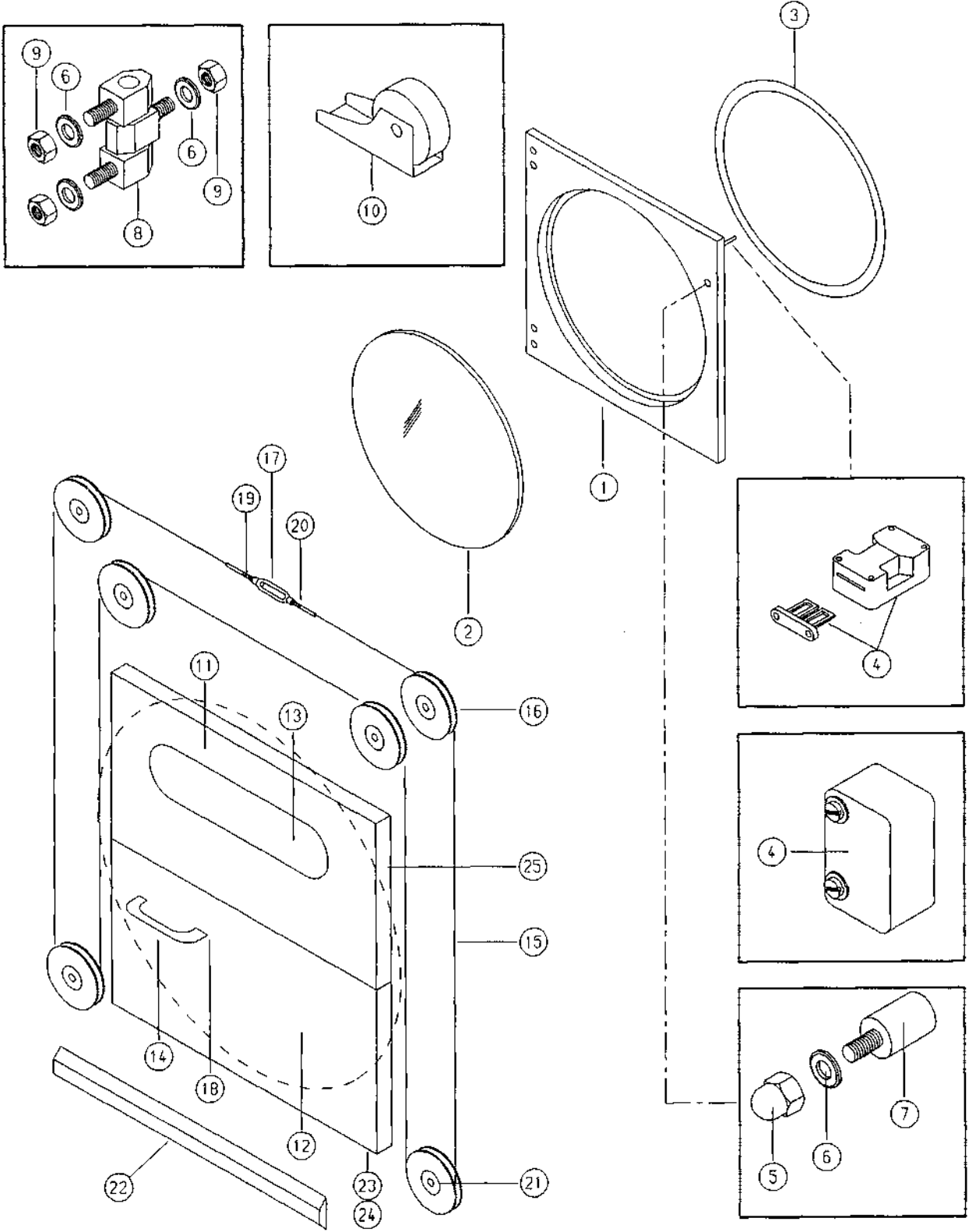


TYPE 600-633

LOADING DOOR

Page

9-3.0



Type 600-633		Spare Parts List Loading Door		Page 9-3.1	
Pos.	Part No.	Part Name	Description	Quant.	
1	226 612-2	Loading door	Type 601-602	1	
	226 472-2	Loading door	Type 612-613	1	
	227 143-2	Loading door	Type 623	1	
2	226 484-3	Pane	Type 601-602	d=525x5	1
	226 419-3	Pane	Type 612-613	d=660x5	1
	227138-4	Pane	Type 623	d=790x5	1
3	005 706	Moltopren	Type 601-602	20x30x2600	1
	005 706	Moltopren	Type 612-613	20x30x2600	1
	005 706	Moltopren	Type 623	20x30x2600	1
	005 779	Seal, Air only textile version Type 623-633		3 S E 4006	1
4	136 401	Switch, Door oscillating repl. modification kit 233 813-5			1
	233 813-5	Modification kit with safety switch 135 483			1
	135 483	Switch, Safety		AZ15ZVR	1
	136 186	Switch, Door sliding, repl. modification kit 233 814-5/233 922-5		925.0101	1
	233 814-5	Kit, modification switch with roller lever 136 429	Type 623		1
	233 922-5	Kit, modification switch with roller lever 136 429	Type 633		1
	136 429	Switch with roller lever		ATO-11-S-IA/AR	1
5	020 208	Nut, Cap	DIN 1587	M6	2
6	020 050	Washer	DIN 125	6,4	6

Type 600-633		Spare Parts List Loading Door			Page 9-3.2
Pos.	Part No.	Part Name	Description	Quant.	
7	135 470	Magnet	150/2	1	
8	121 075	Hinge, Bolt-On Replacem.	227 790-4 EMKA 1055-U2	2	
	227 790-4	Hinge, Bolt-On		2	
9	020 036	Nut, Hex	DIN 934 M6	4	
10	226 998-4	Roller, Snap		1	
11	224 297-2	Door, Loading top	Type 623	1	
	227 368-2	Door, Loading top	Type 633	1	
12	224 298-2	Door, Loading bottom	Type 623	1	
	227 369-2	Door, Loading bottom	Type 633	1	
13	122 001-4	Pane	4x140x490	1	
14	155 022	Handle	GN565-20-160SW	1	
15	224 175-3	Cable	Type 623 6310x3	1	
	227 363-3	Cable	Type 633 7310x3	1	
16	220 110-4	Pulley compl. repl. 226 281-4	d=75	6	
	226 281-4	Pulley			
	220 111-4	Pulley w.o. bearing, repl. 230 116-4	d=75	6	
	230 116-4	Pulley w.o. bearing			
17	020 576	Nut, Tensioner	M6	1	
18	020 567	Screw CS	DIN 7991 M6x16	2	
19	020 572	Nut, Hex left	DIN 934 M6L	1	

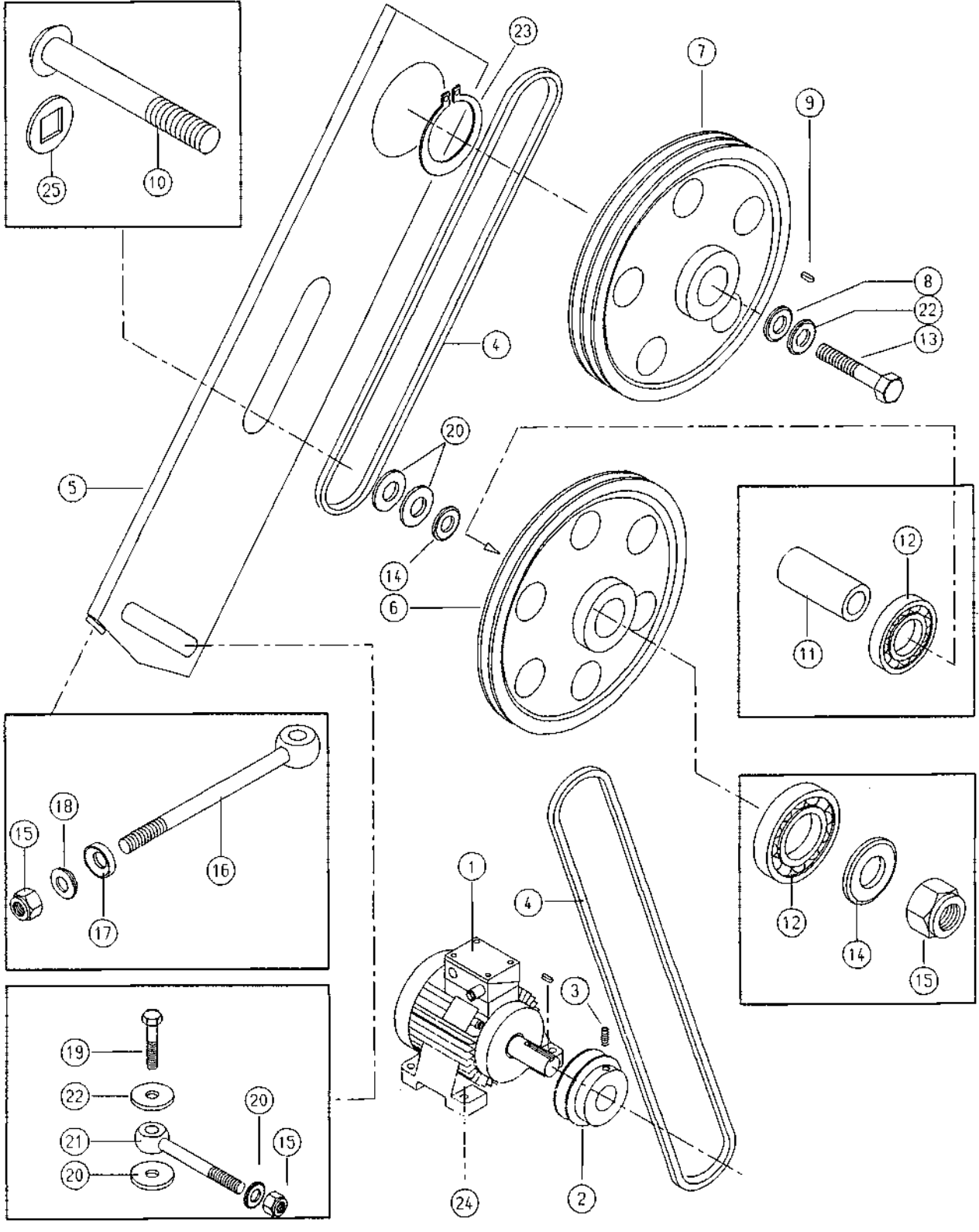
Type 600-633		Spare Parts List Loading Door			Page 9-3.3
Pos.	Part No.	Part Name	Description	Quant.	
20	020 036	Nut, Hex DIN 934	M6	1	
21	100 043	Bearing, Ball for Pulley 220 111-4	6000 2 RS	6	
	100 112	Bearing, Ball for Pulley 220 111-4	6000 2 RS	6	
22	227 796-5	Bumper Type 601-602		1	
	227 794-5	Bumper Type 612-613		1	
	227 421-5	Bumper Type 623		1	
	227 417-5	Bumper Type 633		1	
23	123 041	Seal, Felt Sliding Door Type 623-633	20x3x960	1	
24	123 043	Seal, Felt Sliding Door Type 623-633	6x15x960	1	
25	123 113	Felt, Front Panel Type 601-623	3x20x2600	1	
	123 104	Felt, Front Panel Lifting Door Type 623-633	5x25x3500	1	

TYPE 600

DRUM DRIVE

Page

9-5.0



Type		Spare Parts List			Page
600		Drum Drive			9-5.1
Pos.	Part No.	Part Name	Description	Quant.	
1		Motor, indicate voltage, frequency and kW.	0,7 kW 1500 rpm.	1	
2	226 767-4	Pulley	dw 56	1	
3	020 641	Bar, Thread	DIN 914 M5x10	1	
4	103 199	Belt	FOZ, SPZ-1140	2	
5	226 469-2	Arm, Swing		1	
6	226 965-4	Pulley	dw 280/71	1	
7	226 600-2	Pulley	dw 280; SPZ	1	
8	223 713-4	Washer		1	
9	103 200	Key	DIN 6885 8x7x25	1	
10	020 611	Bolt, Carriage	DIN 603 M12x90	1	
11	226 603-4	Bushing	d=20x47,3	1	
12	100 015	Bearing	2Z	2	
13	020 017	Bolt, Hex	DIN 933 M8x25	1	
14	020 053	Washer	DIN 125 d=13	2	
15	020 254	Bolt, Hex selfl.	DIN 985 M12	3	
16	226 466-3	Bolt, Eye	DIN 444 M12x230	1	
17	020 336	Washer, Cup	DIN 6319 d=14,2	1	
18	020 035	Washer, Spherical	DIN 6319 d=13	1	

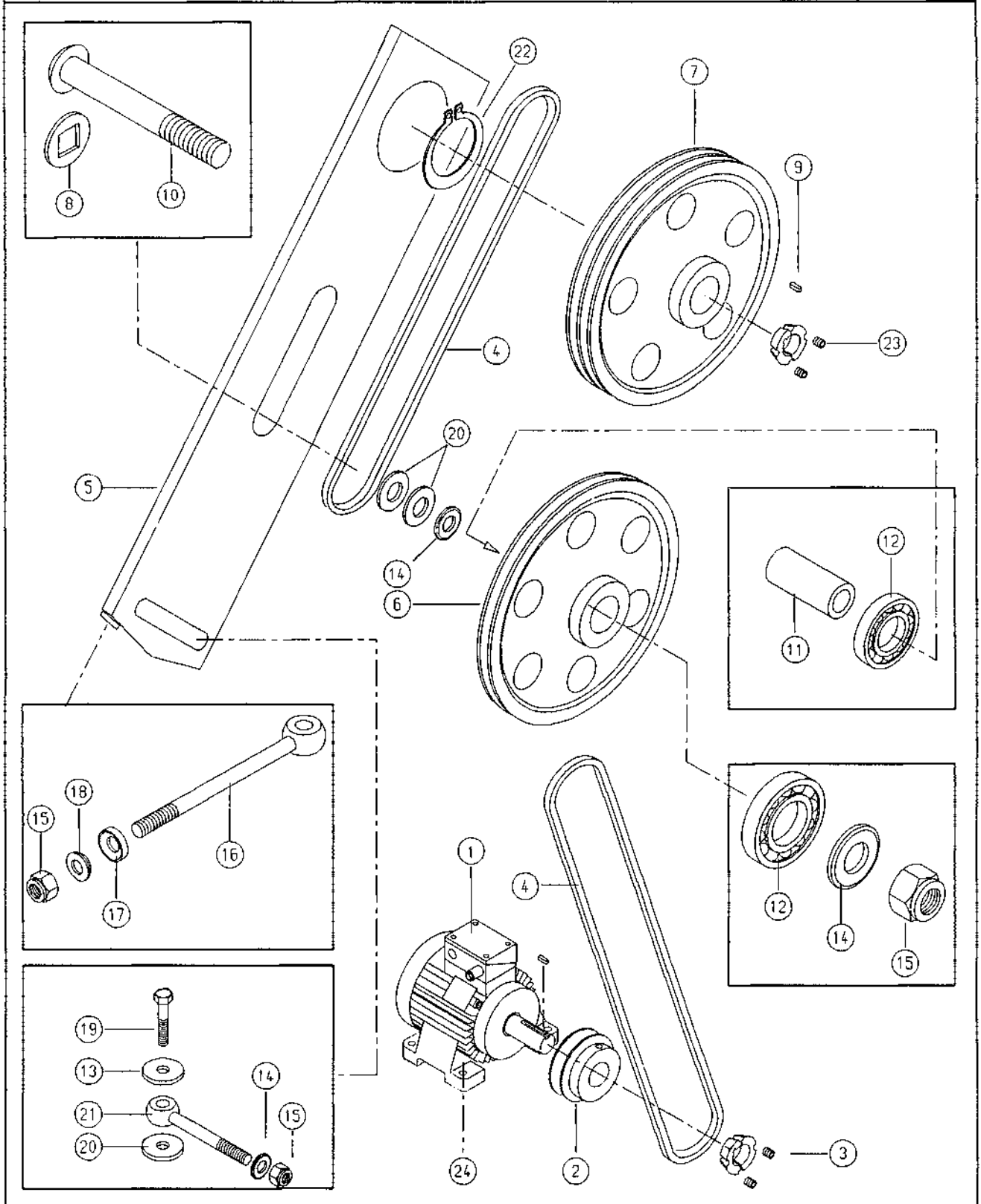
Type		Spare Parts List			Page
600		Drum Drive			9-5.2
Pos.	Part No.	Part Name	Description	Quant.	
19	020 454	Bolt, Hex	DIN 931 M12x45	1	
20	020 469	Washer	DIN 9021 d=13	4	
21	226 454-4	Bolt, Eye	DIN 444 M12x90	1	
22	020 050	Washer, Spring repl.			
	020 134	Washer	DIN 6796 12	2	
23	025 040	Ring, Snap	DIN 471 88x3	1	
24	020 566	Bolt, Allen	DIN 912 M6x25	4	
25	020 930	Washer	DIN 440 V14	1	

TYPE 610

DRUM DRIVE

Page

9-6.0



9503

Type		Spare Parts List			Page
610		Drum Drive			9-6.1
Pos.	Part No.	Part Name	Description	Quant.	
1		Motor, indicate voltage, frequency and kW.	0,37 kW 1000 rpm.	1	
2	103 176	Pulley	dw 67	1	
3	103 174	Taperlock	1108/19	1	
4	103 193	Belt	SPZ 1262	3	
5	226 410-2	Arm, Swing		1	
6	224 305-1	Pulley	dw 355/78	1	
7	226 407-2	Pulley	dw 315	1	
8	020 930	Washer	DIN 440 V14	1	
9	103 191	Key	DIN 6885 10x8x25	1	
10	020 591	Bolt, Carriage	DIN 603 M12x110	1	
11	226 411-4	Bushing	d=20x60,3	1	
12	100 015	Bearing	6004 2Z	2	
13	020 134	Washer	DIN 6796 12	1	
14	020 053	Washer	DIN 125 13	2	
15	020 254	Nut, Hex selflock.	DIN 985 M12	3	

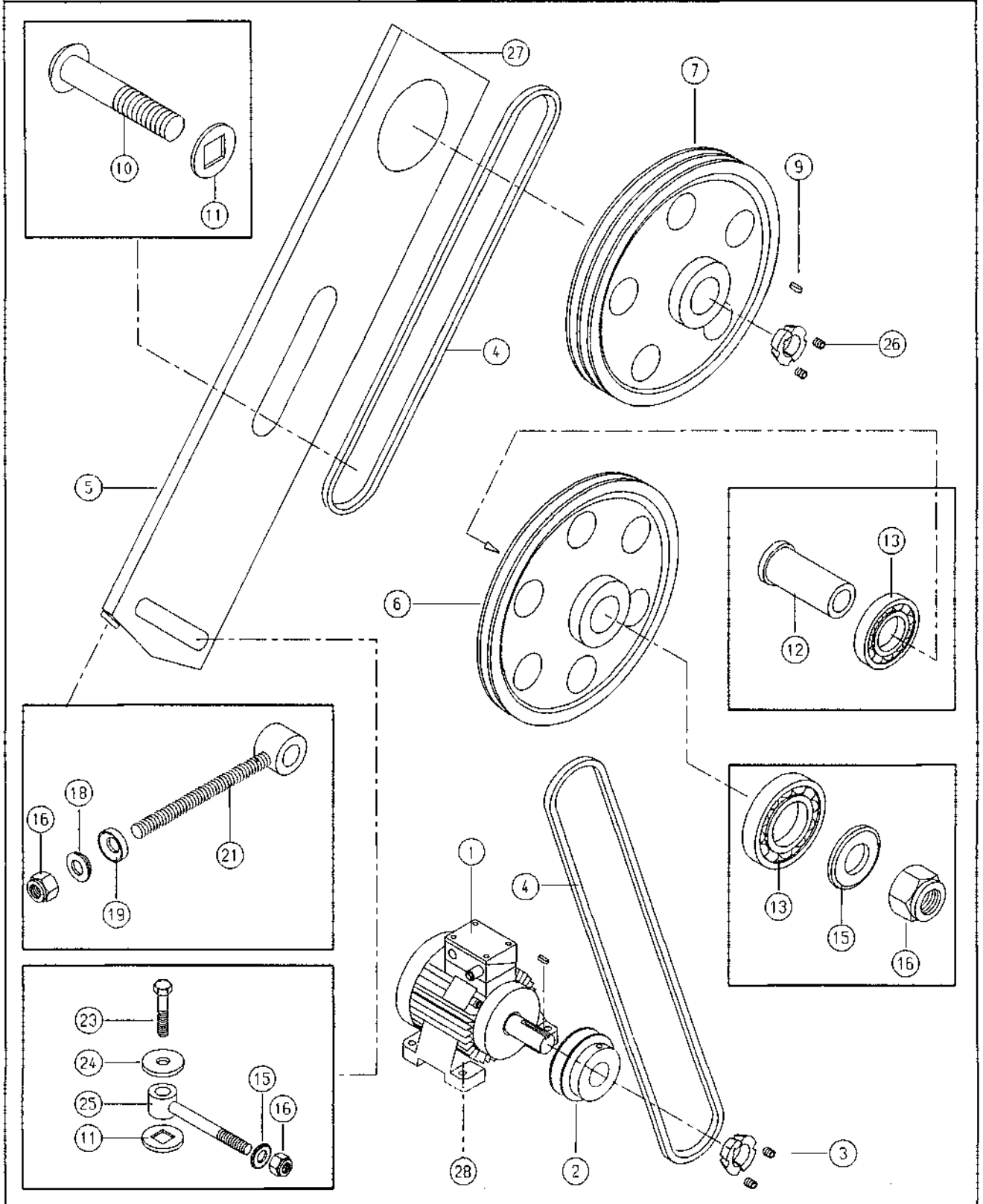
Type		Spare Parts List			Page
610		Drum Drive			9-6.2
Pos.	Part No.	Part Name	Description	Quant.	
16	020 590	Bolt, Eye	DIN 444 M12x260	1	
17	020 336	Washer, Cup	DIN 6319 d=14,2	1	
18	020 035	Washer, Spherical	DIN 6319 d=13	1	
19	020 454	Bolt, Hex	DIN 931 M12x45	1	
20	020 469	Washer	DIN 9021 d=13	3	
21	020 596	Bolt, Eye	DIN 444 M12x90	1	
22	025 040	Ring, Snap	DIN 471 88x3	1	
23	103 192	Taperlock	2012/35	1	
24	020 142	Bolt, Allen	DIN 912 M8x20	4	

TYPE 623

DRUM DRIVE

Page

9-7.0



9603

Type		Spare Parts List			Page
623		Drum Drive			9-7.1
Pos.	Part No.	Part Name	Description	Quant.	
1		Motor, indicate voltage, frequency and kW.	0,55 kW 1500 rpm.	1	
2	103 163	Pulley	50 Hz dw 80; SPZ1	1	
	103 176	Pulley	60 Hz dw 67; SPZ1	1	
3	103 175	Taperlock	50 Hz 1210; d=19	1	
	103 265	Taperlock	60 Hz 1108; d=19	1	
4	103 165	Belt	SPZ 1520	5	
5	224 157-3	Arm, Swing		1	
6	224 291-4	Pulley	dw 400/dw 80	1	
7	224 228-3	Pulley	dw 400	1	
8					
9	103 162	Key	14x9x40-Form A	1	
10	020 536	Bolt, Carriage	DIN 603 M16x160	1	
11	020 535	Washer	DIN 440 V18	2	
12	224 161-4	Bushing w. Shoulder	d=20x60,3	1	
13	100 075	Bearing	6005 2RS	2	
14					
15	020 054	Washer	DIN 125 17	2	
16	020 537	Nut, Hex selflock.	DIN 985 M16	3	

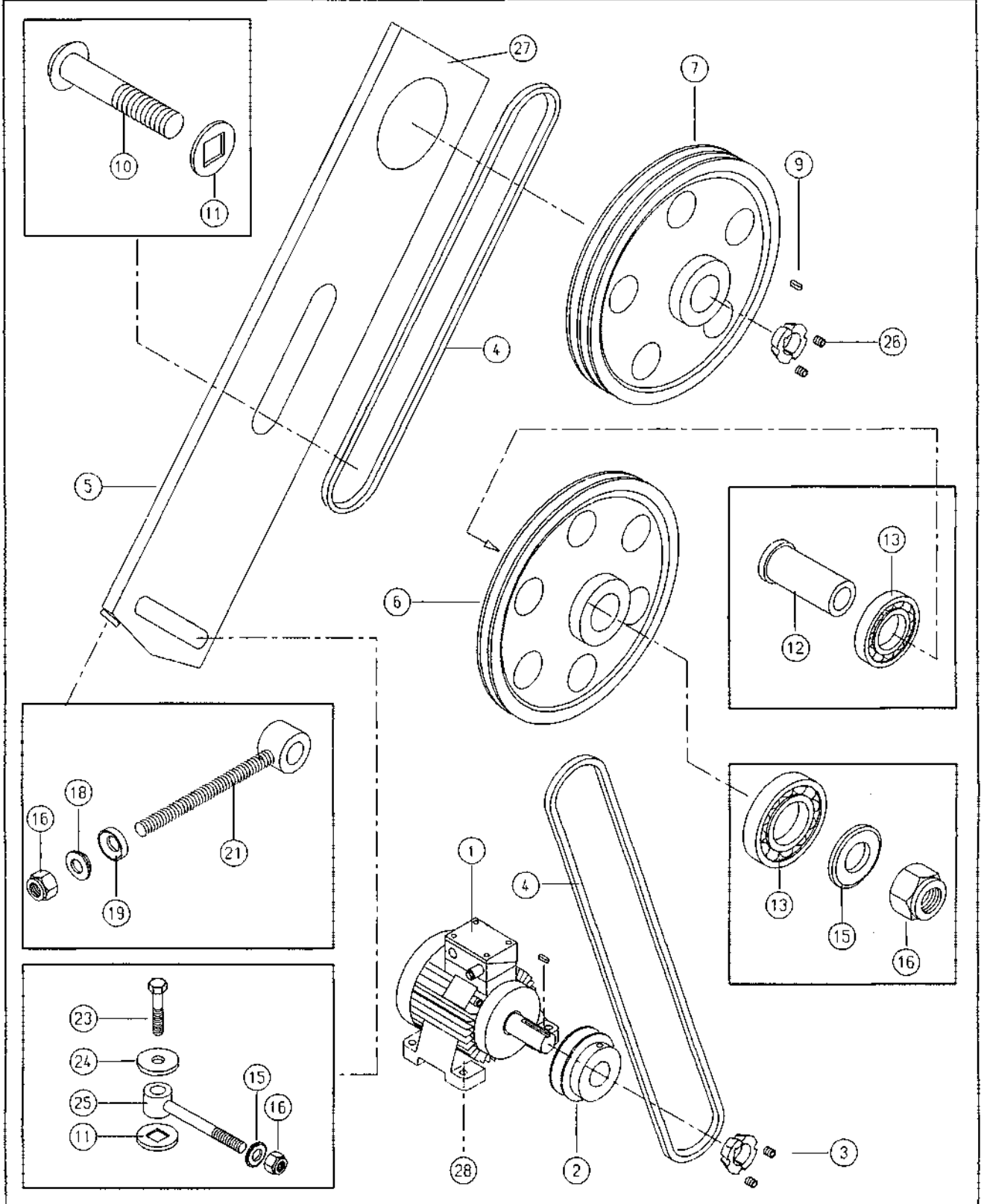
Type		Spare Parts List			Page
623		Drum Drive			9-7.2
Pos.	Part No.	Part Name	Description	Quant.	
17					
18	020 538	Washer, Spherical	DIN 6319 17C	1	
19	020 539	Washer, Cup	DIN 6319 19D	1	
20					
21	226 933-4	Bar, Tension	Type 623	1	
22					
23	020 358	Bolt, Hex	DIN 933 M16x80	1	
24	020 463	Washer	DIN 6796 16	1	
25	224 231-4	Bar, Tension		1	
26	103 106	Taperlock	50/60 Hz 2517; d=45	1	
27	020 125	Bolt, Allen	DIN 912 M6x10	1	
28	020 142	Bolt, Allen	DIN 912 M8x20	4	

TYPE 633

DRUM DRIVE

Page

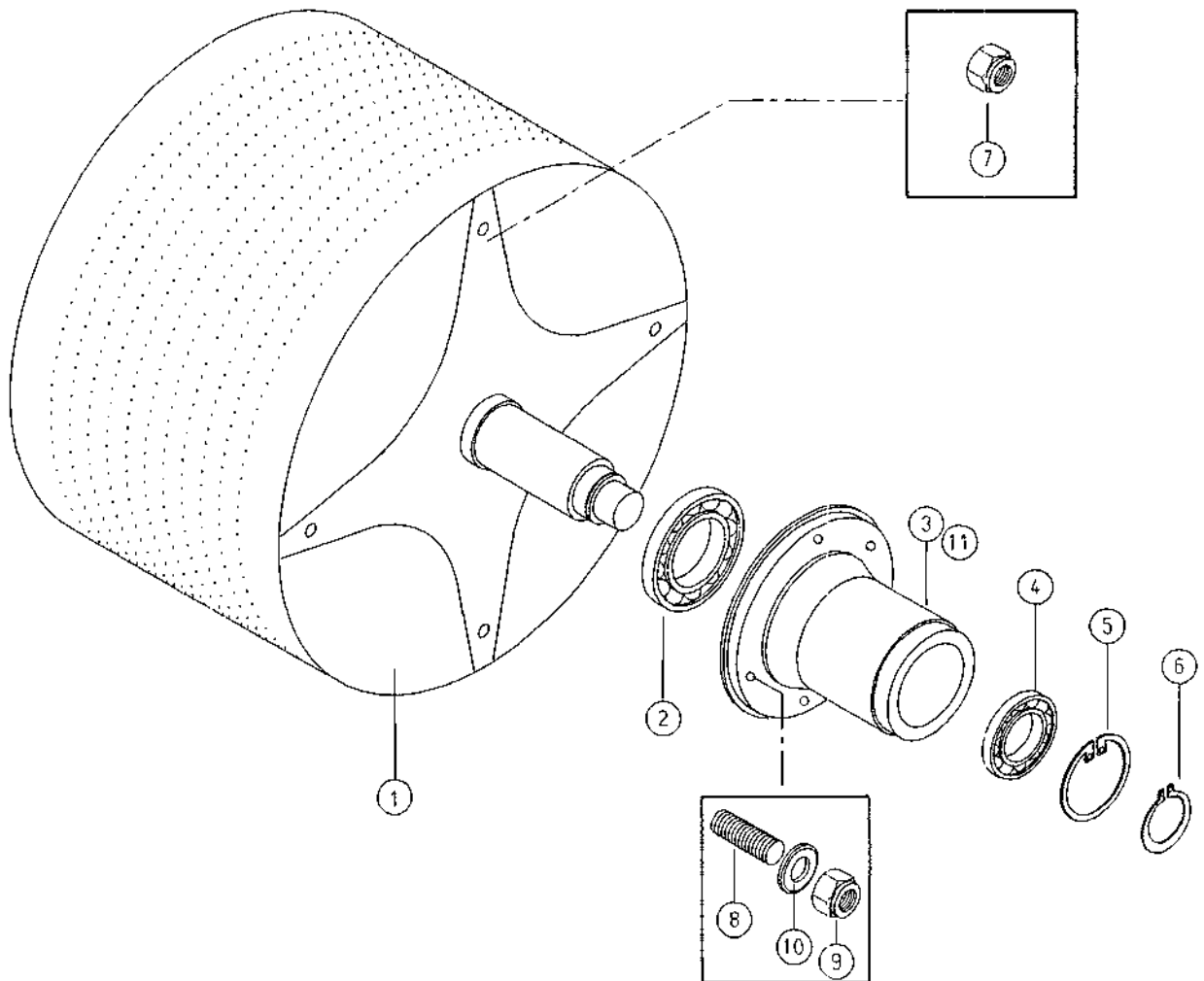
9-8.0



9503

Type		Spare Parts List			Page
633		Drum Drive			9-8.1
Pos.	Part No.	Part Name	Description	Quant.	
1		Motor, indicate voltage, frequency and kW.	0,55 kW 1500 rpm.	1	
2	103 163	Pulley	50 Hz dw 80; SPZ1	1	
	103 176	Pulley	60 Hz dw 67; SPZ1	1	
3	103 088	Taperlock	50 Hz 1210; d=24	1	
	103 265	Taperlock	60 Hz 1108; d=24	1	
4	103 236	Belt	SPZ 1650	5	
5	224 157-3	Arm, Swing		1	
6	224 291-4	Pulley	dw 400/dw 80	1	
7	224 497-3	Pulley	dw 450	1	
8					
9	103 162	Key	14x9x40-Form A	1	
10	020 536	Bolt, Carriage	DIN 603 M16x160	1	
11	020 535	Washer	DIN 440 V18	2	
12	224 161-4	Bushing w. Shoulder	d=20x60,3	1	
13	100 075	Bearing	6005 2RS	2	
14					
15	020 054	Washer	DIN 125 17	2	
16	020 537	Nut, Hex selflock.	DIN 985 M16	3	

Type		Spare Parts List			Page
633		Drum Drive			9-8.2
Pos.	Part No.	Part Name	Description	Quant.	
17					
18	020 538	Washer, Spherical	DIN 6319 17C	1	
19	020 539	Washer, Cup	DIN 6319 19D	1	
20					
21	226 933-4	Bar, Tensioner	Type 633	1	
22					
23	020 358	Bolt, Hex	DIN 933 M16x80	1	
24	020 463	Washer	DIN 6796 16	1	
25	224 231-4	Bar, Tensioner		1	
26	103 235	Taperlock	50/60 Hz 3020/45	1	
27	020 125	Bolt, Allen	DIN 912 M6x10	1	
28	020 008	Bolt, Allen	DIN 912 M8x25	4	



Type 600-633		Spare Parts List Drum Suspension			Page 9-9.1
Pos.	Part No.	Part Name		Description	Quant.
1	227 353-2	Drum	Type 601		1
	227 354-2	Drum	Type 602		1
	227 279-2	Drum	Type 612		1
	227 281-2	Drum	Type 613		1
	227 276-2	Drum	Type 623		1
	227 181-2	Drum	Type 633		1
2	100 106	Bearing	Type 601-602	6008 2Z-C3	1
	100 104	Bearing	Type 612-613	6010 2Z-C3	1
	100 103	Bearing	Type 623	6012 2Z-C3	1
	100 105	Bearing	Type 633	6014 2Z-C3	1
3	227 025-2	Bearing, Flange	Type 601-602		1
	227 026-2	Bearing, Flange	Type 612-613		1
	227 027-2	Bearing, Flange	Type 623		1
	227 180-2	Bearing, Flange, repl. 227 182-3			1
	227 182-3	Bearing, Flange	Type 633		1
4	100 107	Bearing	Type 601-602	6007 2Z-C3	1
	100 106	Bearing	Type 612-613	6008 2Z-C3	1
	100 104	Bearing	Type 623-633	6010 2Z-C3	1
5	025 006	Ring, Snap	DIN 472	Type 601-602 62x2	1
	025 022	Ring, Snap	DIN 472	Type 612-613 68x2,5	1
	025 035	Ring, Snap	DIN 472	Type 623-633 80x2,5	1

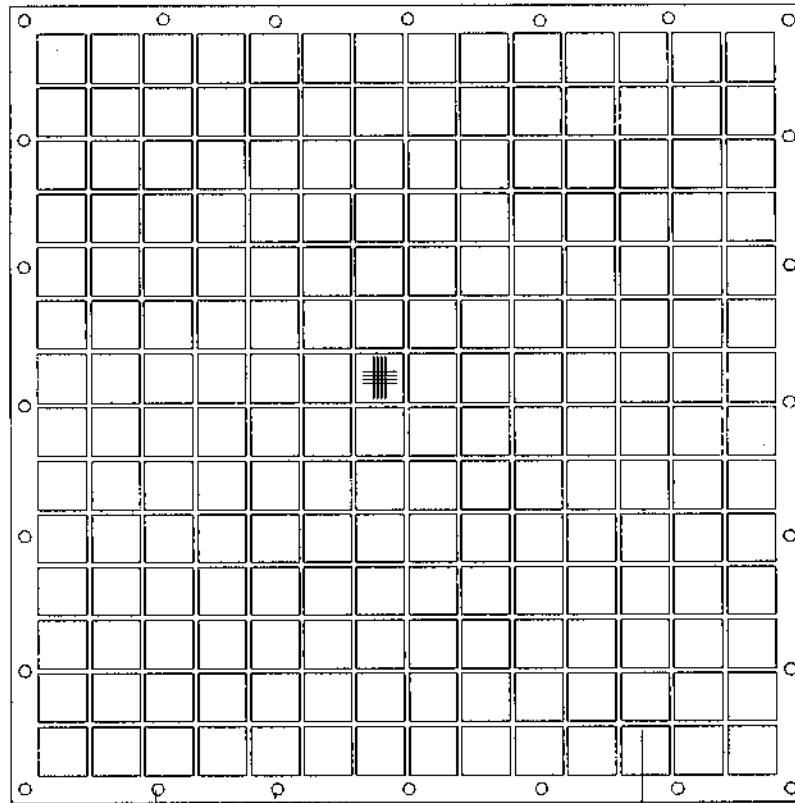
Type 600-633		Spare Parts List Drum Suspension				Page 9-9.2
Pos.	Part No.	Part Name			Description	Quant.
6	025 015	Ring, Snap	DIN 471	Type 601-602	35x1,5	1
	025 021	Ring, Snap	DIN 471	Type 612-613	40x1,75	1
	025 033	Ring, Snap	DIN 471	Type 623-633	50x2,0	1
7	020 274	Nut, Hex selff.	DIN 980	Type 601-613	M10	4
	020 044	Nut, Hex selff.	DIN 980	Type 623-633	M12	4
8	020 642	Bar, Thread	DIN 976	Type 601-602	M10x30	4
	020 642	Bar, Thread	DIN 976	Type 612-613	M10x30	4
	020 691	Bar, Thread	DIN 976	Type 623-633	M12x40	4
9	020 274	Nut, Hex selff.	DIN 980	Type 601-602	M10	4
	020 274	Nut, Hex selff.	DIN 980	Type 612-613	M10	4
	020 044	Nut, Hex selff.	DIN 980	Type 623-633	M12	4
10	020 052	Washer	DIN 125	Type 601-602	10,5	4
	020 052	Washer	DIN 125	Type 612-613	10,5	4
	020 053	Washer	DIN 125	Type 623-633	13	4
11	102 048	Nipple, Grease			H-6	1
	234 041-5	Bearing, Flange compl.		Type 601-602		1
	234 040-5	Bearing, Flange compl.		Type 612-613		1
	234 034-5	Bearing, Flange compl.		Type 623		1
	234 039-5	Bearing, Flange compl.		Type 633		1

TYPE 600-633

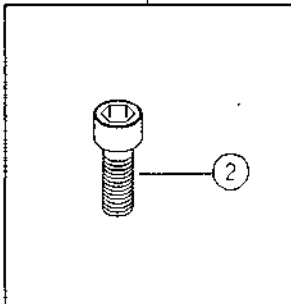
LINT SCREEN

Page

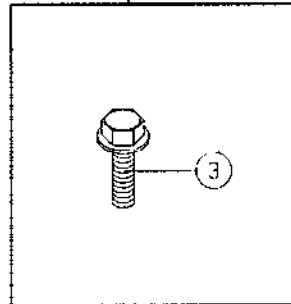
9-10.0



1



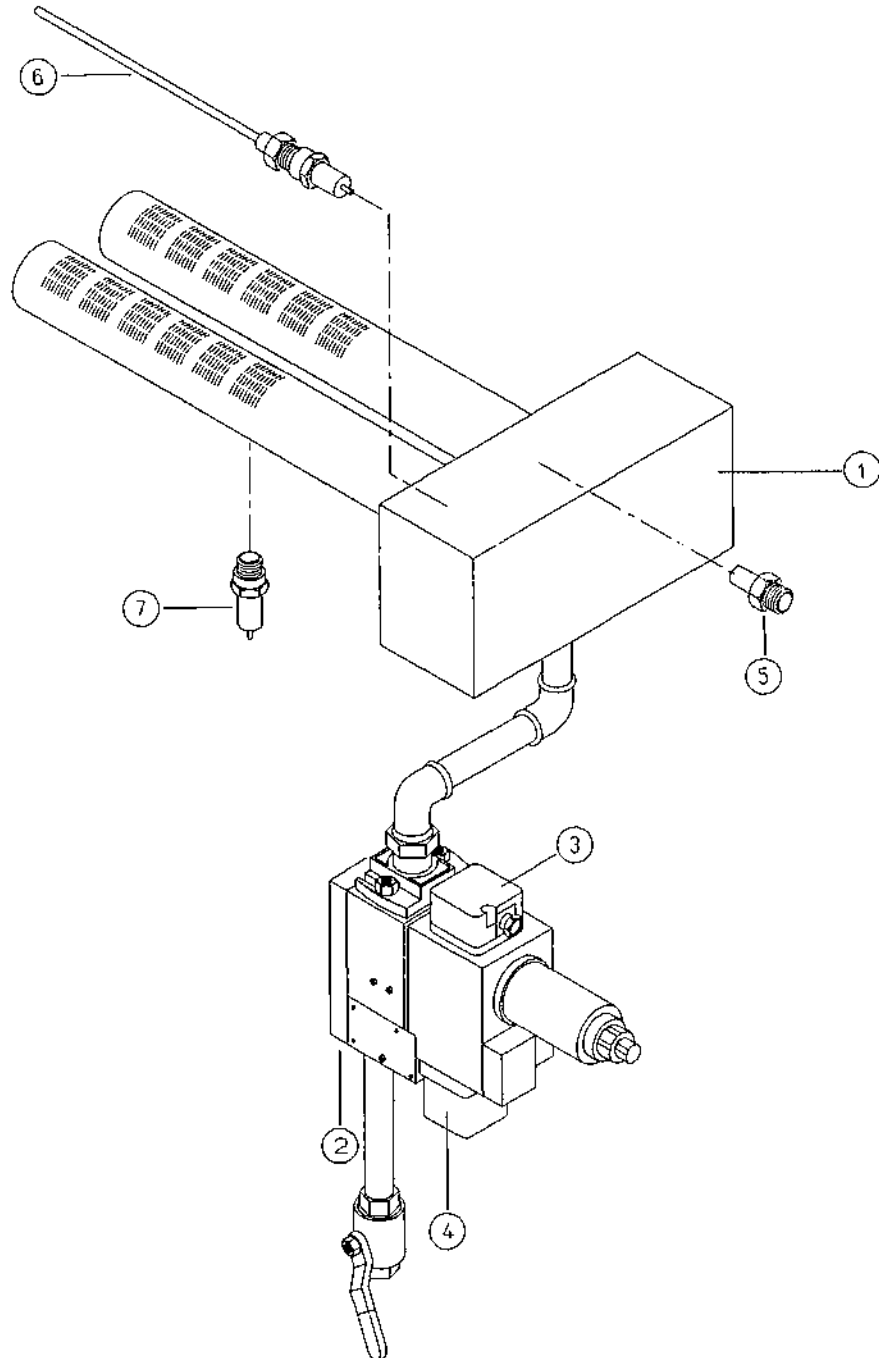
2



3

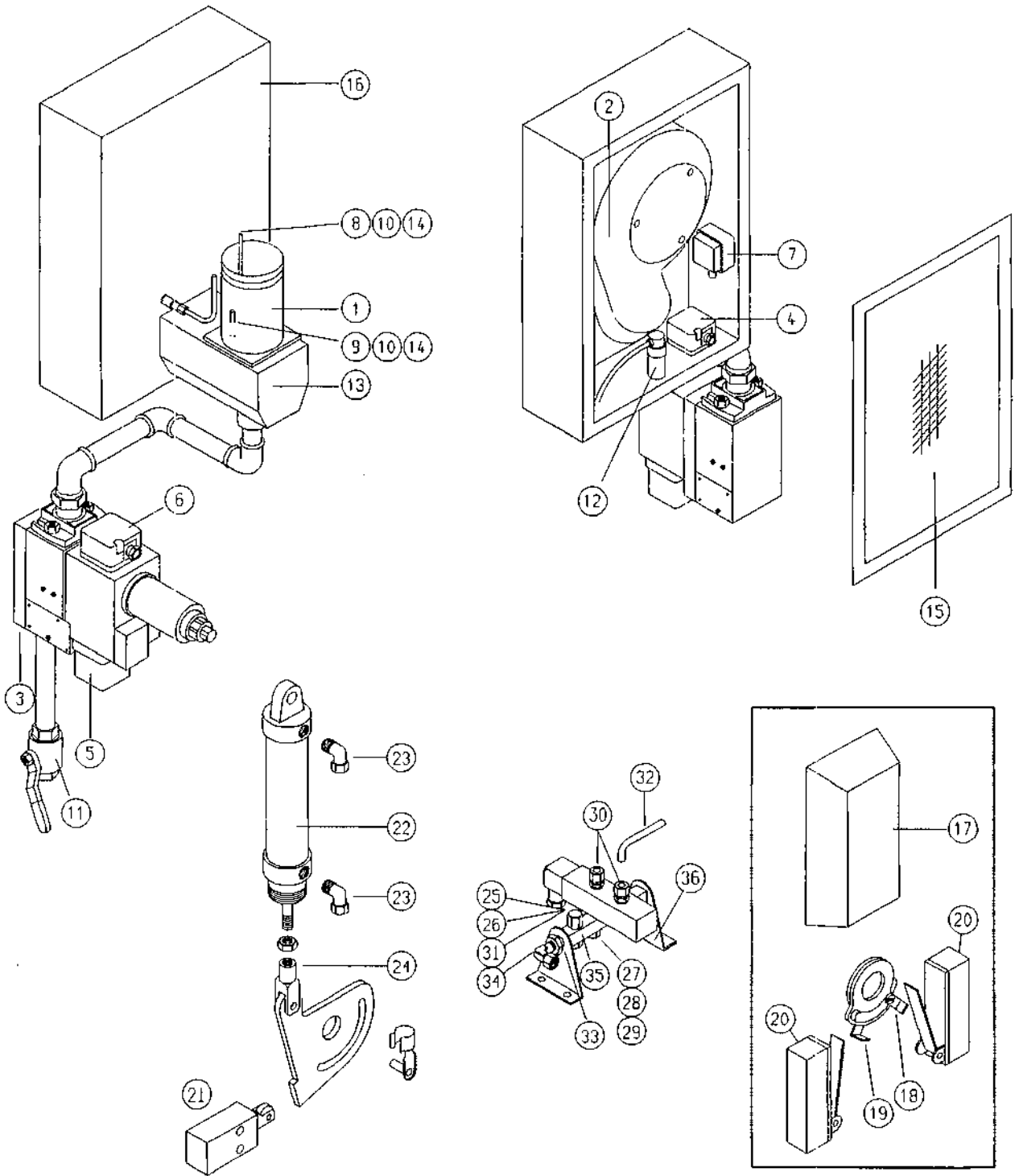
Type		Spare Parts List			Page
600-633		Lint Screen			9-10.1
Pos.	Part No.	Part Name	Description	Quant.	
1	226 652-1	Screen, Lint	Type 600 666x668	1	
	226 521-1	Screen Lint	Type 610 831x833	1	
	224 313-1	Screen, Lint	Type 623 943x945	1	
	227 293-1	Screen, Lint	Type 633 943x1165	1	
2	020 140	Boit, Allen	DIN 912 M4x10	16	
3	020 345	Boit, Hex w. washer	M6x16	8	

NOTICE: WHEN ORDERING PARTS FOR THE GAS HEATING
INDICATE SERIAL NUMBER.



Type		Spare Parts List		Page
601-602		Gas Heating		9-11.1
Pos.	Part No.	Part Name	Description	Quant.
		Attention: Indicate serial number when ordering parts for the gas heating.		
1		Burner		
2		Multiblock		
3		Switch, Pressure gas min.		
4		Switch, Pressure gas max.		
5		Nozzle		
6		Rod, Flame		
7		Plug, Spark		

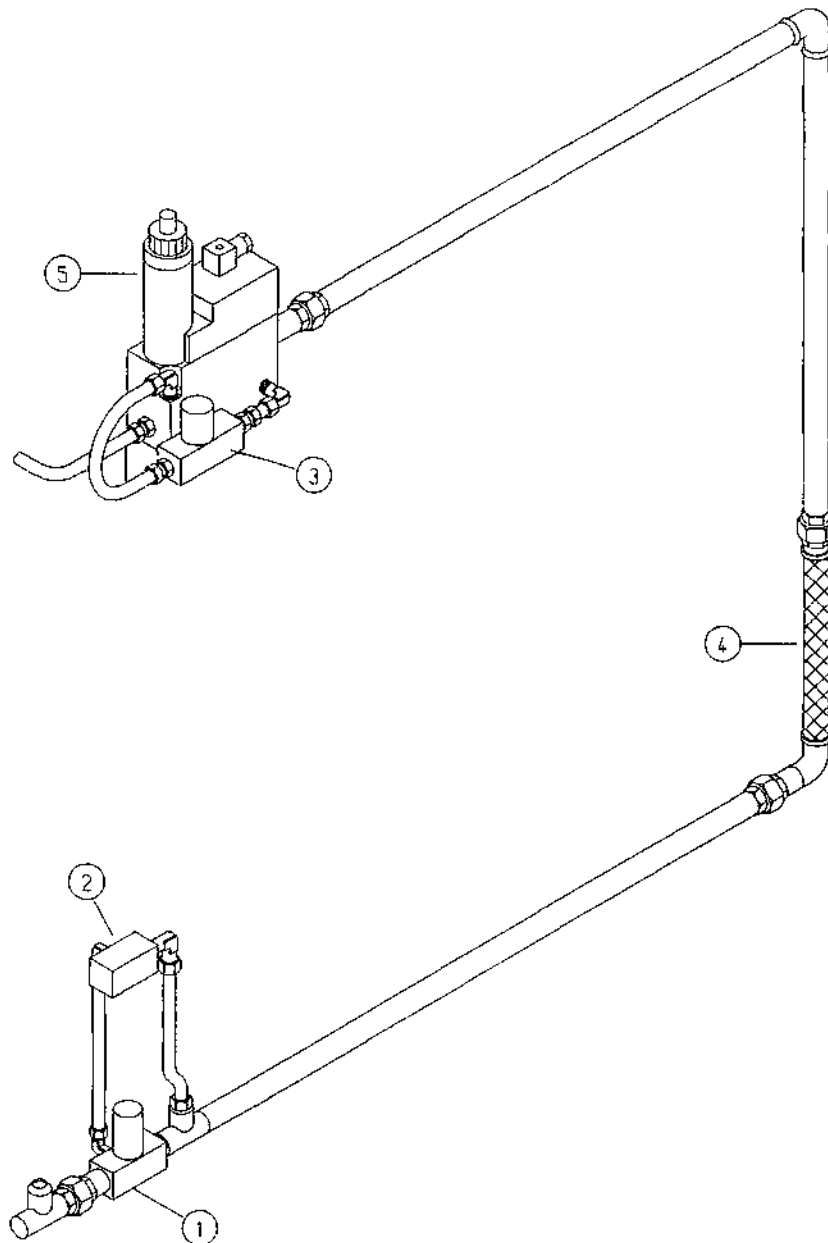
NOTICE: WHEN ORDERING PARTS FOR THE GAS HEATING
INDICATE SERIAL NUMBER.



Type		Spare Parts List		Page
612-633		Gas Heating		9-12.1
Pos.	Part No.	Part Name	Description	Quant.
		Attention: Indicate serial number when ordering parts for the gas heating.		
1		Head, Burner		1
2		Blower, Burner		
		Blower, Burner w. flap		1
3		Multiblock		
	119 067	Flange, Connection w. test nipple	3/4"	1
	119 068	Flange, Connection w.o. test nipple	3/4"	1
4		Switch, Pressure burner air		
5		Switch, Pressure gas min.		
6		Switch, Pressure gas max. (if required)		
7		Transformer, Ignition		
8		Rod, Flame		
9		Plug, Spark		
10	007 221	Cable, Ignition		1
11		Valve, Ball		
12	136 307	Condenser		
13		Tube, Flame		
14	119 034	Cap, Plug	with SAE	2
15		Screen, Lint		
16		Burner compl. Natural Gas		1
		Burner compl. Liquid Gas		1

Type		Spare Parts List		Page
612-633		Gas Heating		9-12.2
Pos.	Part No.	Part Name	Description	Quant.
17	107 324	Motor, Flap Repl. 234 043-5	Belimo KH220	1
	234 043-5	Modification from Flap Motor to Cylinder		1
18	233 012-4	Cam right for Pos. 17		1
19	233 224-4	Cam left for Pos. 17		1
20	136 186	Microswitch for Pos. 17	0925.01.01.	2
21	136 422	Switch, Limit w. Roll		1
22	112 562	Cylinder	DSNU-12-50-P-A	1
23	112 563	Fitting	LCK M5-PK-4	2
24	021 210	Clevis	SG-M6	1
25	111 967	Valve, Solenoid	4/2 230V/50Hz	1
26	112 286	Valve, Solenoid	4/2 115V/60Hz	1
27	111 941	Bolt, Banjo	NG 6, R 1/8"	1
28	028 287	Seal, Lip		1
29	028 160	O-Ring		1
30	112 564	Fitting	CK 1/8 - PK-4	2
31	112 034	Muffler	G 1/8"	1
32	006 082	Hose, Plastic	PU - 4 - blue	5 mtr.
33	111 048	Reducer	3/8"x1/4"	1
34	111 082	Fitting	WE 8 R 1/4	1
35	112 303	Bracket, Valve Battery Twin	1xfree, 1xblind	1
36	112 253	Holder for Valve Battery		2

Notice: When ordering spare parts for the gas heating, the serial number must be indicated.



Type 623-633		Spare Parts List Gas Assembly Tilt Version			Page 9-12.4
Pos.	Part No.	Part Name	Description	Quant.	
		Notice: When ordering spare parts for the gas heating, the serial number must be indicated.			
1	119 056	Valve, Safety (Type 623-633)	MVD 210/5 220V 50 Hz	1	
2	136 019	Control, Leakage Unit (Type 623-633)	TC218 R05-T	1	
3	119 007	Valve, Pilot Flame (Type 623-633)	VG 8 R 05/N60 220V 50 Hz	1	
4	121 087-3	Hose, Gas (Type 623)	NW 20	1	
	227 493-3	Hose, Steam (Type 633)	NW 25	1	
5		Multiblock		1	

Type		Spare Parts List			Page
600-623		Steam Heating			9-14.1
Pos.	Part No.	Part Name	Description	Quant.	
1	118 103	Exchanger, Heat	Type 601 4 Rows	1	
	118 101	Exchanger, Heat	Type 602 4 Rows	1	
	118 084	Exchanger, Heat	Type 612 4 Rows	1	
	118 085	Exchanger, Heat	Type 613 4 Rows	1	
	118 043-3	Exchanger, Heat	Type 623 4 Rows	1	
2	226 726-2	Filter, Steam	Type 601 488x508	1	
	226 713-2	Filter, Steam	Type 602 508x748	1	
	226 572-2	Filter, Steam	Type 612 588x738	1	
	228 003-2	Filter, Steam recycling	Type 612 588x738	1	
	226 576-2	Filter, Steam	Type 613 588x1008	1	
	228 004-2	Filter, Steam recycling	Type 613 588x1008	1	
	224 327-2	Filter, Steam	Type 623 688x1008	1	
	227 751-5	Filter, Steam recycling	Type 623 688x1008	1	
3	111 614	Valve, Control up to 10 bar	554/25/D195-1-1-50700	1	
	111 258	Valve, Control up to 15 bar	DN25/512.25-D-885-1-2	1	
4	028 014	Seal, Flange	DN 25	1	
5	028 122	Seal, Flange	DN 15	1	
6	020 021	Bolt, Alien	DIN 912 M12x50	4	
7	118 049	Flange, Threaded	DIN 2566 DN 25	1	
8	030 054	Elbow	Nr.94 DN 25	1	

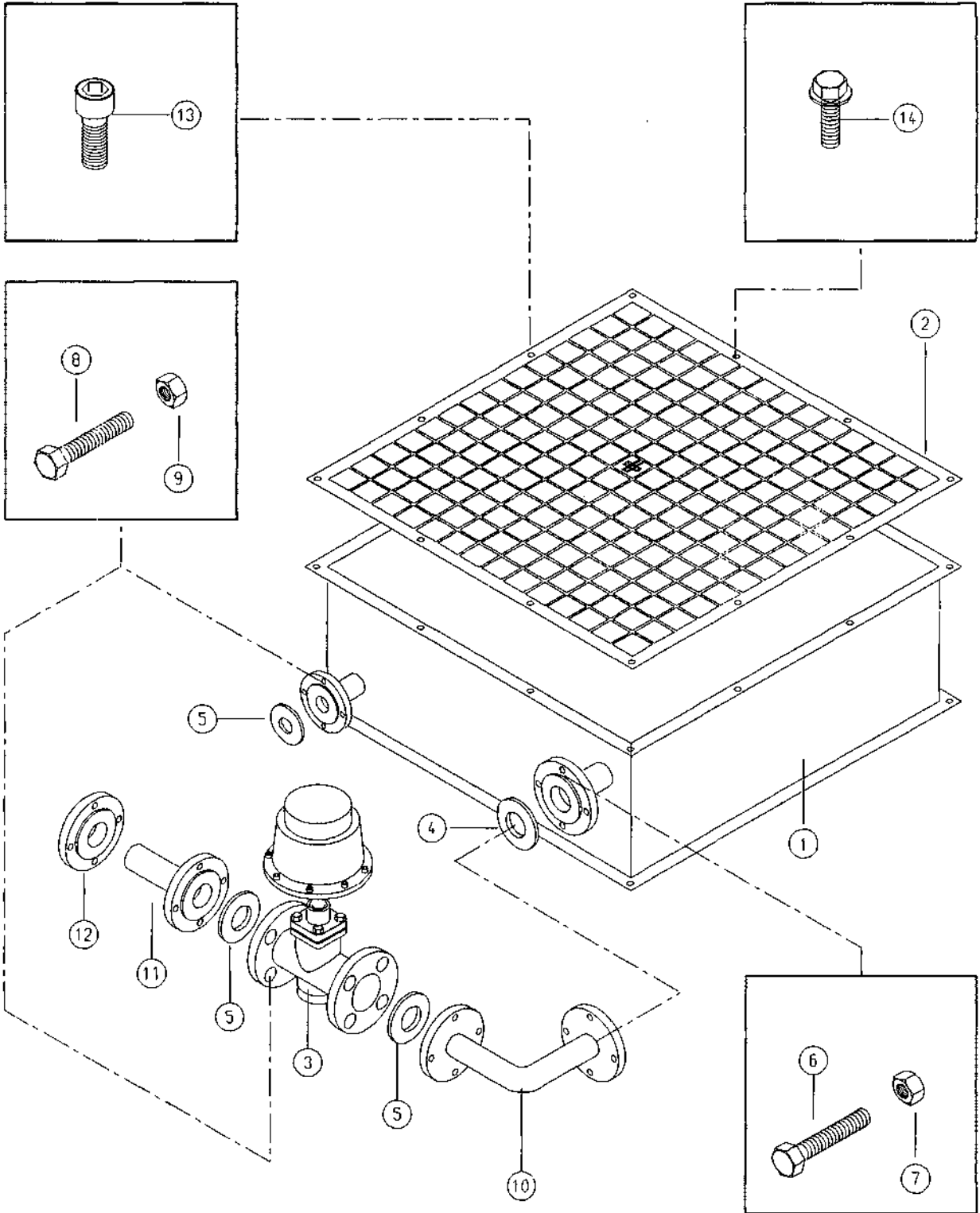
Type		Spare Parts List			Page
600-623		Steam Heating			9-14.2
Pos.	Part No.	Part Name	Description	Quant.	
9	030 313	Nipple, Test	1"x60	1	
10	020 587	Bolt, Allen	DIN 912 M4x6	12	
11	020 345	Bolt, Hex w. washer	M6x16	8	
12	020 087	Bolt, Hex	DIN 933 M12x50	4	
13	020 039	Nut, Hex	DIN 934 M12	4	
14	118 001	Flange, Weld-on	DN 25	1	
15	118 093	Flange, Weld-on	DN 15	1	
16	020 454	Bolt, Hex	DIN 933 M12x45	4	
17	020 039	Nut, Hex	DIN 934 M12	4	

TYPE 633

STEAM HEATING

Page

9-15.0



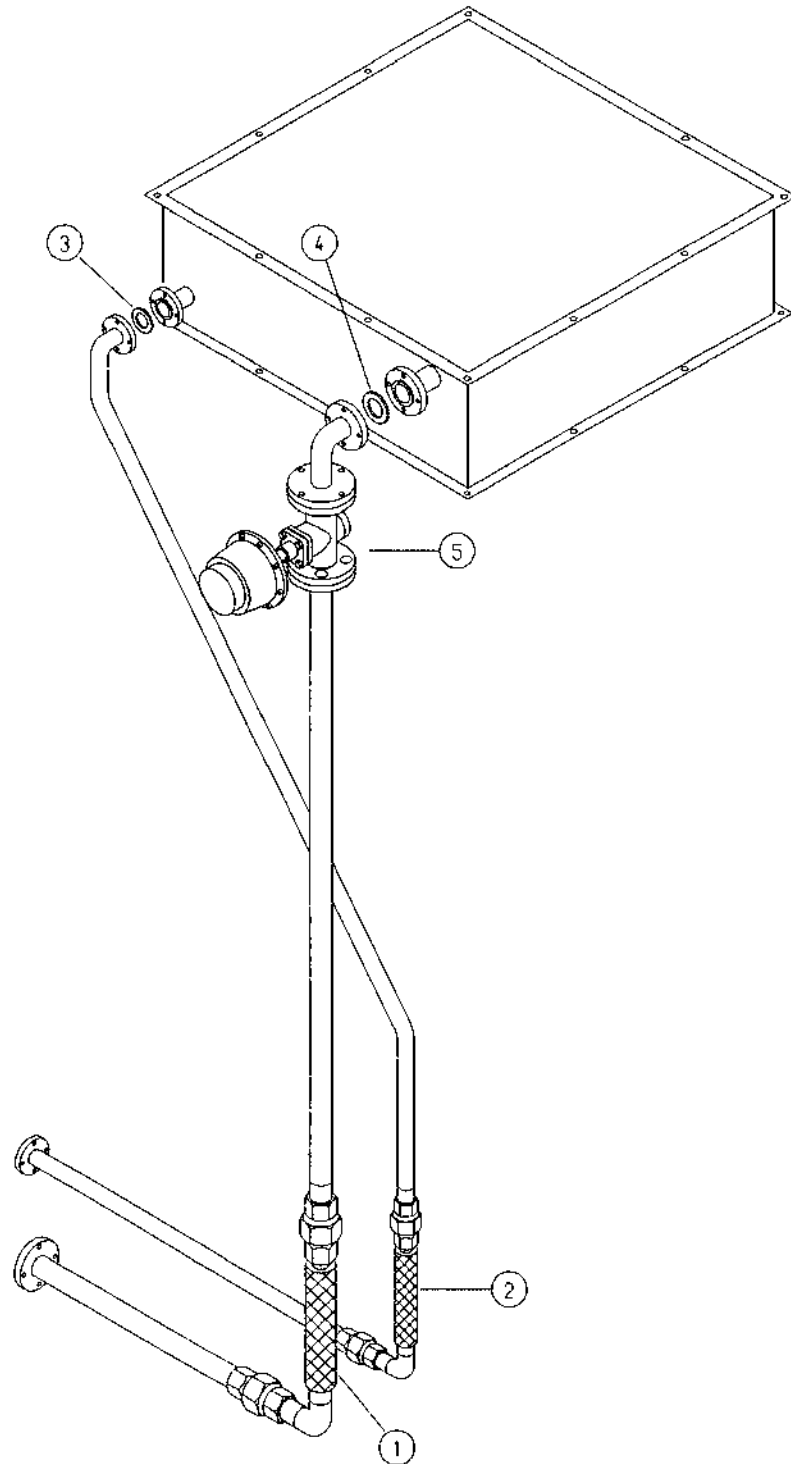
Type		Spare Parts List			Page
633		Steam Heating			9-15.1
Pos.	Part No.	Part Name	Description	Quant.	
1	118 124-3	Exchanger, Heat	Type 633 6 Rows	1	
2	227 274-2	Screen, Lint steam	Type 633 792x1012	1	
	227 884-5	Screen, Lint recycling	Type 633 792x1012	1	
3	111 258	Valve, Control up to 15 bar	DN25/512.25-D-885-1-2	1	
4	028 015	Seal, Flange	DN 40	1	
5	028 014	Seal, Flange	DN 25	3	
6	020 087	Bolt, Hex	DIN 933 M16x60	4	
7	020 040	Nut, Hex	DIN 934 M16	4	
8	020 021	Bolt, Hex	DIN 933 M12x50	12	
9	020 039	Nut, Hex	DIN 934 M12	12	
10	224 673-3	Elbow 90°	DN 40/DN 25	1	
11	224 674-4	Fitting	D 25	1	
12	118 001	Flange, Weld-on	DN 25	1	
13	020 587	Bolt, Allen	DIN 912 M4x6	12	
14	020 345	Bolt, Hex w. washer	M6x16	8	

TYPE 623-633

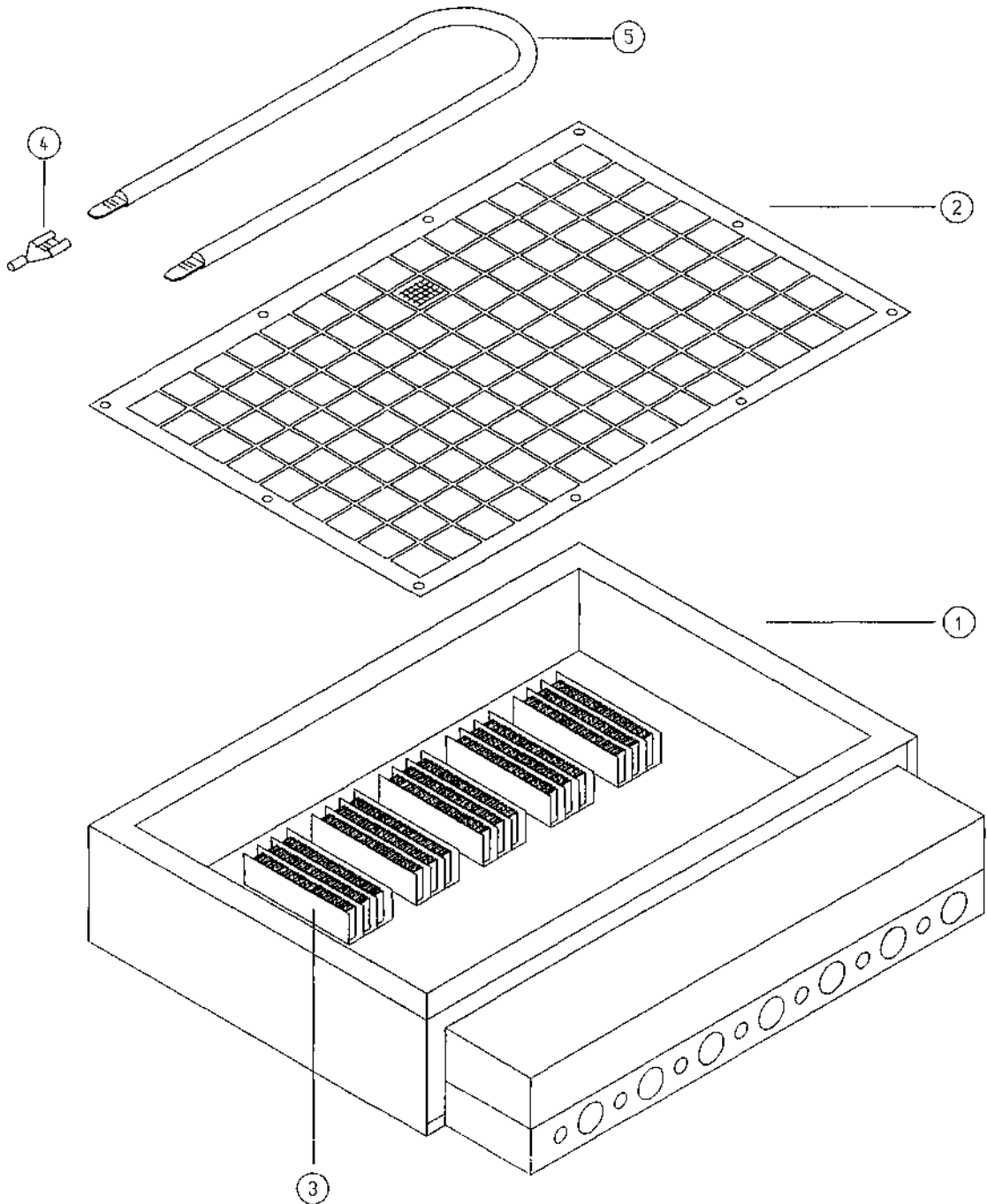
STEAM PIPES TILT VERSION

Page

9-15.2



Type		Spare Parts List			Page
623-633		Steam Pipes Tilt Version			9-15.3
Pos.	Part No.	Part Name	Description	Quant.	
1	227 493-3	Hose, Steam	(Type 623) NW 25	1	
2	227 568-3	Hose, Steam	(Type 633) NW 40	1	
	227 494-3	Hose, Steam	(Type 623) NW 15	1	
3	227 493-3	Hose, Steam	(Type 633) NW 25	1	
	028 122	Seal, Flange	(Type 623) DN 15 / PN 16	1	
4	028 014	Seal, Flange	(Type 633) DN 40 / PN 16	3	
		Seal, Flange	(Type 623) DN 25 / PN 16	2	
5	111 258	Seal, Flange	(Type 633) DN 25 / PN 16	1	
		Valve, Piston	DN25/512.25D 885-1-2	1	



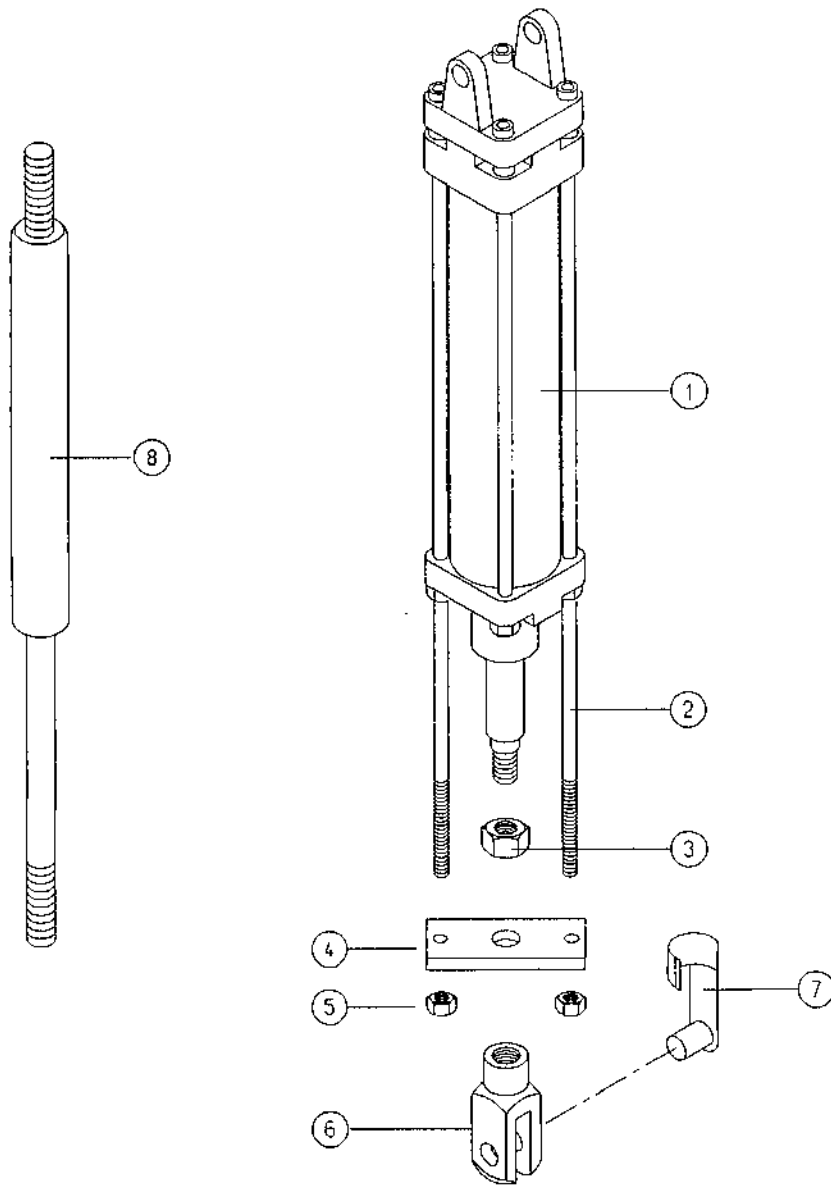
Type		Spare Parts List			Page
600-633		Electric Heating			9-16.1
Pos.	Part No.	Part Name	Description	Quant.	
1	226 742-1	Heating, electric compl.	Type 601 until 97/9	1	
	234 045-1	Heating, electric compl.	Type 601 from 97/9	1	
	226 741-1	Heating, electric compl.	Type 602 until 97/3	1	
	233 961-1	Heating, electric compl.	Type 602 from 97/3	1	
	227 546-5	Heating, electric compl.	Type 612	1	
	227 348-5	Heating, electric compl.	Type 613	1	
	226 966-5	Heating, electric compl.	Type 623	1	
	227 851-3	Heating, electric compl.	Type 633	1	
	2	226 726-2	Lint, Screen	Type 601	1
		226 713-2	Lint, Screen	Type 602	1
226 572-2		Lint, Screen	Type 612 588x738	1	
226 576-2		Lint, Screen	Type 613 588x1008	1	
224 327-2		Lint, Screen	Type 623 688x1008	1	
227 884-5		Lint, Screen	Type 633 792x1012	1	
228 003-2		Lint, Screen recycling	Type 612 588x738		
228 004-2		Lint, Screen recycling	Type 613 588x1008		
227 751-5		Lint, Screen recycling	Type 623 688x1008		
227 884-5		Lint, Screen recycling	Type 633 792x1012		
3	136 461	Element, heating, until 97/9	2x1,5 kW		
4	137 168	Plug			
5	227 137-3	Element, Heating tubular, from 97/2 Type 602, 612	1 kW 593mm		
	227 105-3	Element, Heating tubular Type 613, 623	1,5 kW 860mm		
	234 046-3	Element, Heating tubular, from 97/9 Type 601	0,6 kW		

TYPE 623-633

RECYCLING CYLINDER

Page

9-18.0



Type		Spare Parts List		Page
623-633		Recycling Cylinder		9-18.1
Pos.	Part No.	Part Name	Description	Quant.
1	111 061	Cylinder, Pneumatic	DZS1040/100 PD 28312	1
2	020 657	Bar, Thread	M6x170	2
3	020 036	Nut, Hex	DIN 934 M6	1
4	222 610-4	Plate		1
5	020 289	Nut, Hex	DIN 936 M12	2
6	020 161	Clevis	M12x24	1
7	020 162	Bolt ES		1
8	027 040	Spring, Gas	A3/A3 40-060- 230/700 N 8805	2
	111 543	Repair kit for cylinder pos. 1		1

Type 600-633		Spare Parts List Make-up Air Flap			Page 9-19.1
Pos.	Part No.	Part Name	Description	Quant.	
1	226 550-2	Flap, Make-up Air	Type 612	1	
	226 593-2	Flap, Make-up Air	Type 613	1	
	224 277-2	Flap, Make-up	Type 623	1	
	227 236-1	Flap, Make-up Air	Type 633	1	
2	111 062	Cylinder, Pneumatic repl. 112 032	Type 612-623	1	
	112 032	Cylinder, Pneumatic	Type 612-623	1	
	111 720	Cylinder, Pneumatic repl. 112 185	Type 633	1	
	112 185	Cylinder, Pneumatic	Type 633	1	
3	020 289	Nut, Hex	DIN 936 M12	1	
	020 290	Nut, Hex	DIN 936 M16	1	
4	100 086	Bushing DU	Type 612-623 20/23x16,5	1	
	100 100	Bushing DU	Type 633 25/28x21,5	1	
5	100 043	Bearing	6000 2RS	2	
6	223 752-4	Bushing, Spacer	15/11x3	2	
7	020 052	Washer	DIN 125 10,5	2	
8	020 051	Washer	DIN 125 8,4	2	
9	020 037	Nut, Hex	DIN 934 M8	2	
10	100 040	Bushing DU	Type 612-623 20/23x20	1	
	100 101	Bushing DU	Type 633 25/28x25	1	
11	020 621	Washer	DIN 9021 10,5	1	
	223 713-4	Washer	d=40	1	

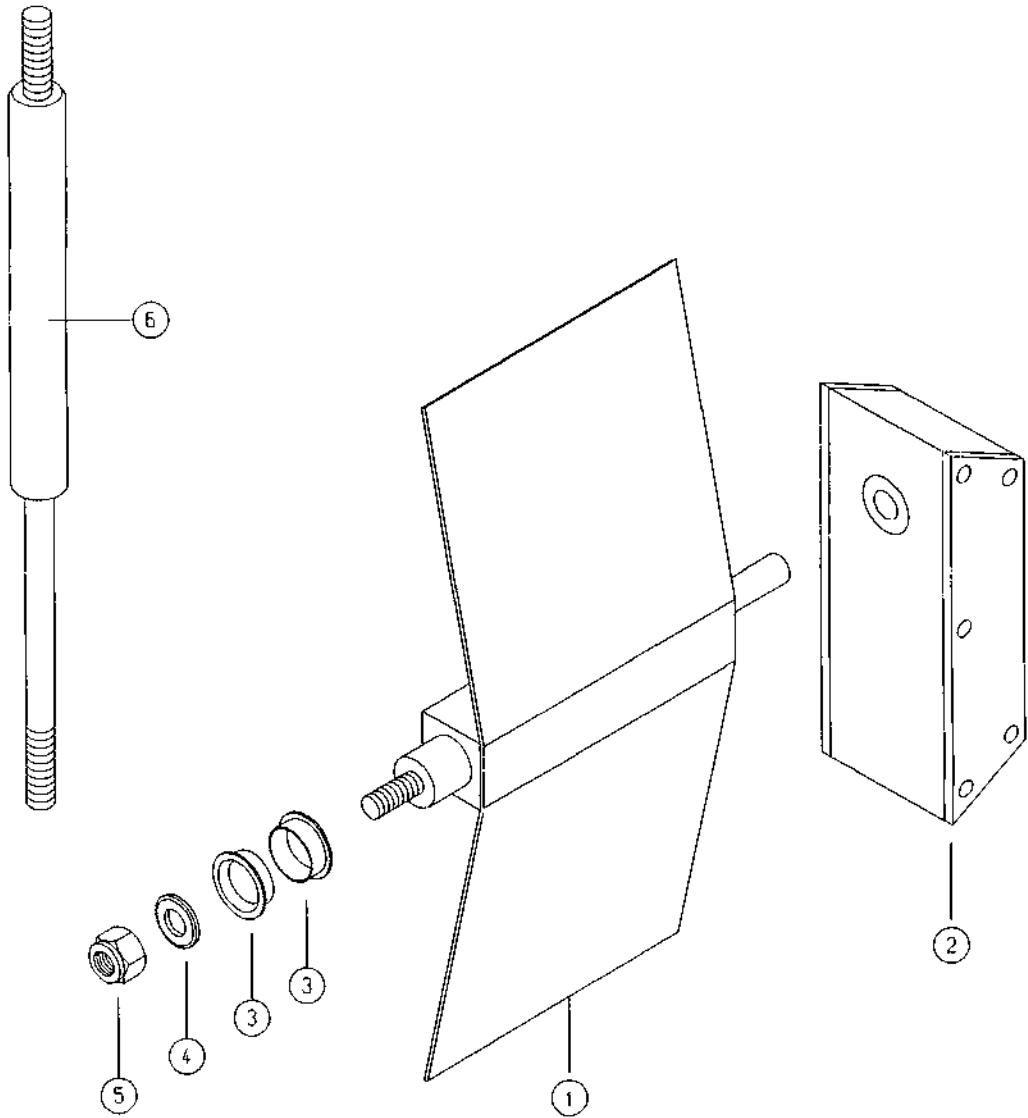
Type 600-633		Spare Parts List Make-up Air Flap			Page 9-19.2
Pos.	Part No.	Part Name	Description	Quant.	
12	020 115	Bolt, Allen DIN 912	M10x20	1	
	020 453	Bolt, Allen DIN 912	M8x16	1	
13	226 568-4	Bloc, Pivot Type 612-623	L40x43	1	
	227 246-4	Bloc, Pivot Type 633	50x65	1	
14	226 587-4	Guide Type 612-623	1,48x43x64,5	1	
	227 247-4	Guide Type 633	1,48x65x74,5	1	
15	020 274	Bolt, Hex selfl. DIN 980	M10	2	
16	226 604-4	Bolt, Special	M10x45	2	
17	226 802-3	Angle, repl. 233 161-4		1	
	233 161-4	Angle		1	
18	107 325	Motor, Control Type 601-602	SM 220	1	
19	020 040	Bolt, Hex DIN 934	M16	2	
20	226 784-4	Bar, Thread	M16x147	1	
21	020 161	Clevis	M12	1	
22	020 162	Bolt ES	12	1	
23	226 785-4	Bolt, Eye	M10x50	1	
24	100 003	Bushing DU	12/14x10	1	
25	020 038	Bolt, Hex DIN 934	M10	1	
26	226 783-4	Lever, Threaded	40x15x12	1	

TYPE 612-613

RECYCLING FLAP STEAM

Page

9-20.0

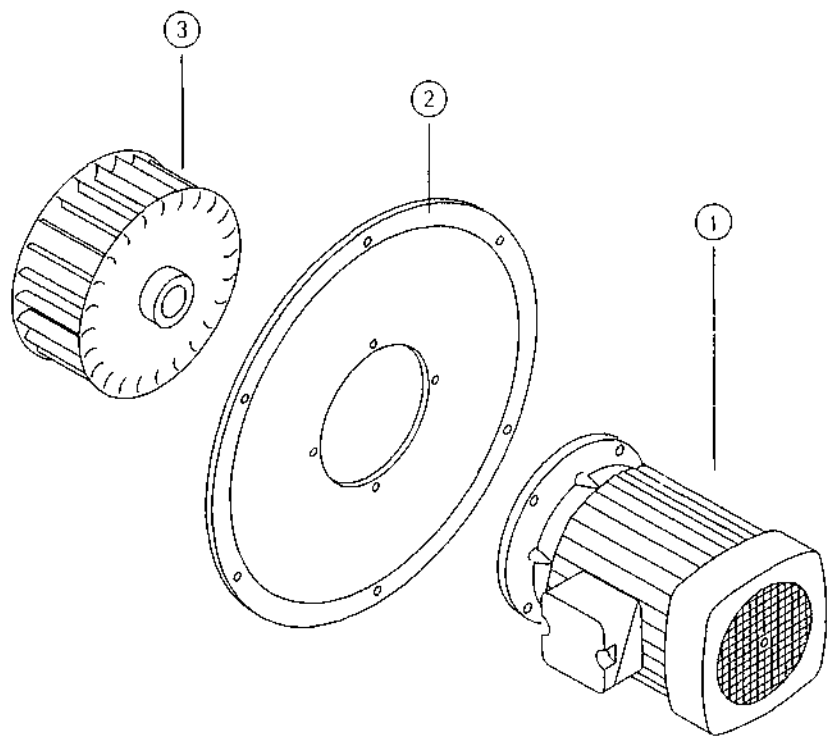


Type		Spare Parts List			Page
612-613		Recycling Flap Steam			9-20.1
Pos.	Part No.	Part Name	Description	Quant.	
1	226 768-2	Flap, Recycling		1	
2	107 324	Motor, Control Repl. 234 042-5	Belimo KM 220	1	
	234 042-5	Modification to Control Motor 107 849		1	
	107 849	Motor, Control	Belimo NM 230	1	
3	100 088	Bushing w. shoulder	d=8x10x5,5	2	
4	020 046	Washer	DIN 125 6,4	1	
5	020 158	Nut, Hex selflock.	DIN 980 M6	1	
6	027 040	Spring, Gas	A3/A3-40-060-230/700 N 8805	2	

TYPE 600-633

BLOWER ASSEMBLY

Page
9-22.0



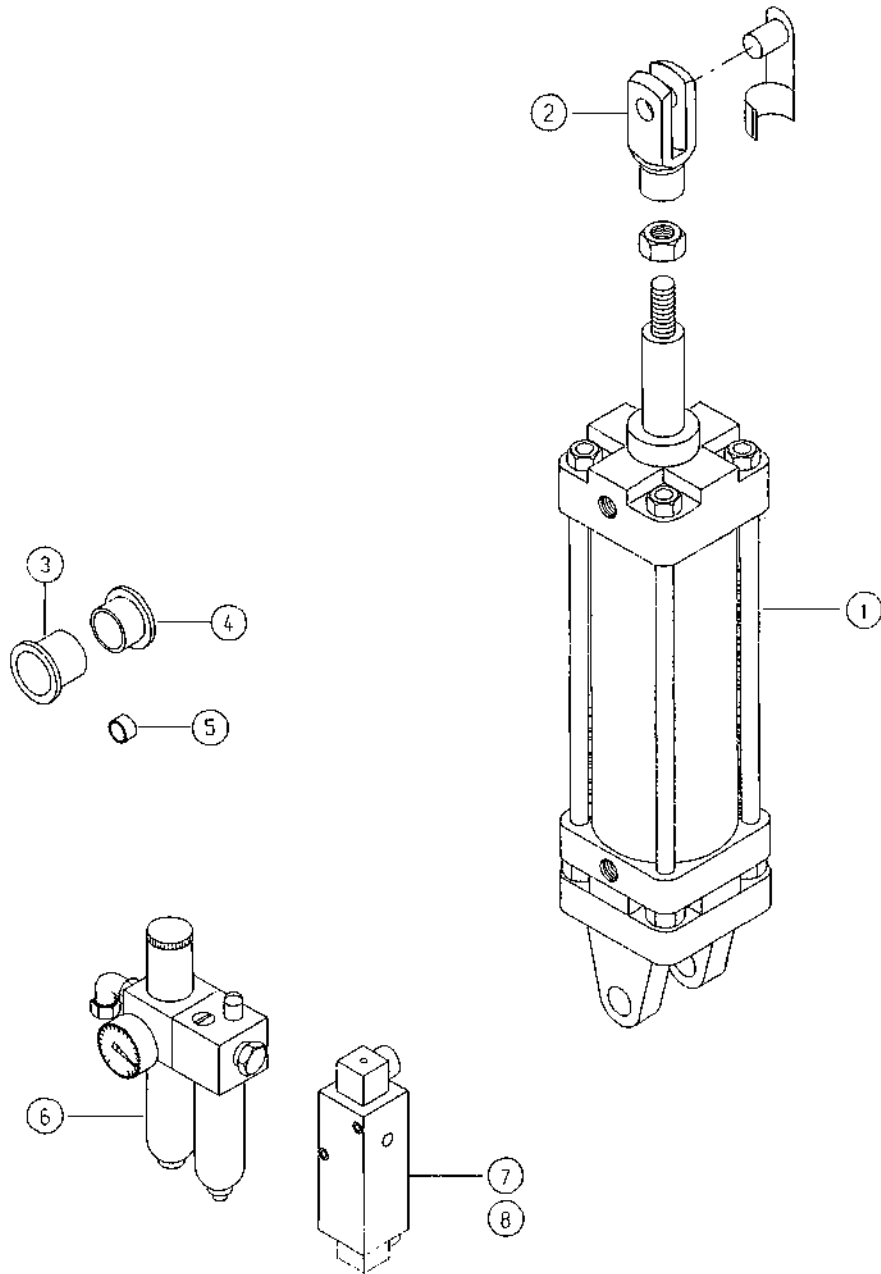
Type 600-633		Spare Parts List Blower Assembly		Page 9-22.1
Pos.	Part No.	Part Name	Description	Quant.
1		Motor, indicate voltage, frequency and kW.		1
2	226 717-4	Flange, Motor	Type 601-602	1
	226 596-4	Flange, Motor	Type 612-613	1
	226 607-4	Flange, Motor	Type 623	1
	227 207-4	Flange, Motor	Type 633	1
3		Wheel, Blower	Type 601-602*	1
		Wheel, Blower	Type 612-613*	1
		Wheel, Blower	Type 623*	1
		Wheel, Blower	Type 633*	1
* : Indicate serial no. and motor data				

TYPE 623-633

TILT ASSEMBLY

Page

9-23.0



Type 623-633		Spare Parts List Tilt Assembly			Page 9-23,1
Pos.	Part No.	Part Name	Description	Quant.	
1	111 057	Cylinder, Pneumatic (Type 623)	Indic. serial no.	1	
		Repair kit for cylinder 111 057	Indic. serial no.	1	
	111 057	Cylinder, Pneumatic (Type 633) for gas version	Indic. serial no.	1	
		Repair kit for cylinder 111 057	Indic. serial no.	1	
	111 615	Cylinder, Pneumatic (Type 633) for steam version	Indic. serial no.	2	
		Repair kit for cylinder 111 615	Indic. serial no.	1	
2	020 745	Clevis with Bolt (Type 623-633)	M27	1/2	
3	100 089	Bushing, Glycodur (Type 623-633)	18x20x12	2/4	
4	100 090	Bushing Glycodur (Type 623-633)	20x23x11.5	2/4	
5	226 903-4	Spacer (Type 623-633)		2	
6	111 063	Regulator, Air	SKL 1/4" H-H-W	1	
7	223 440-5	Valve, Tilting (Type 623-633)	50/60 Hz	1	
8	111 065	Valve, Throttle	DRV 8 1/4"		

Type		Spare Parts List		Page
600-633		Electrical Components		9-24.1
Pos.	Part No.	Part Name	Description	Quant.
	135 054	Protector, Motor	PKZM 1-1,6	
	135 055	Protector, Motor	PKZM 1-2,4	
	135 057	Protector, Motor	PKZM 1-6	
	135 058	Protector, Motor	PKZM 1-10	
	135 109	Fuse, Control	2 Amp.	
	135 656	Contactor	3250 BV08 230V 4S	
	135 172	Contactor	DIL OM	
	135 191	Contactor, Auxiliary	11 DIL M	
	135 174	Contactor	DIL 1 M	
	135 171	Contactor	DIL 00 M	
	135 173	Contactor	DIL 0AM	
	135 192	Contactor, Auxiliary	22 DIL M	
	135 565	Unit, Reversing		
	135 585	Timer		
	135 587	Timer, repl. 914 119-5	6 Min - 12 h	
	914 119-5	Timer, modification kit		
	135 218	Timer	3 Sek - 12 h	
	135 196	Relay	230 V - 50 Hz	
	135 206	Socket, Relay		

Type		Spare Parts List		Page
600-633		Electrical Components		9-24.2
Pos.	Part No.	Part Name	Description	Quant.
	135 228	Button, Push	D 2 A 1 U	
	135 243	Bloc, Contactor	D A 11	
	135 244	Bloc, Contactor	D A 20	
	135 245	Bloc, Contactor	D B 11	
	135 247	Bloc, Contactor	D C 22	
	135 232	Selector	D 2 G 2 S	
	135 249	Lens, Warning Light	D 2 V 1 R	
	135 253	Base, Warning Light	D F S N	
	135 254	Lens, Illuminated Push Button	D 2 Y 1 R	
	135 258	Base, Illuminated Push Button	D F S N 11	
	135 766	Regulator, two-points	EWTC 102	
	136 343	Transformer for two-points regulator	230 V/12 V	
	227 465-3	Thermocouple w. cable	PT 100	
	135 007	Thermostat	0-200°C	
	135 008	Thermostat	0-300°C	
	135 018	Thermostat	125° 718 RVZ	
	136 461	Element, Heating	2x1,5 kW 230 V	
	111 149	Valve, Magnetic	230 V/ 50 Hz	
	136 012	Transformer, Ignition, repl. 136 026	ZAB 5000 Nr. 078980	

Type 600-633		Spare Parts List Electrical Components		Page 9-24.3
Pos.	Part No.	Part Name	Description	Quant.
	136 401	Switch, Limit for swing door, repl. modification kit 233 813-5	3 S E 4006	
	233 813-5	Kit, modification w. safety switch 135 483		
	135 483	Switch, Safety	AZ152VR	
	136 186	Switch, Limit for sliding door, repl. modification kit 233 814-5	925.0101	
	233 814-5	Switch, Limit repl. modification kit		
	136 429	Switch, Limit w. roller lever	ATO-11-S-IA/AR	
	136 011	Controller, Flame	GAI 22/2	
	136 001	Controller, Flame	LFL 1.335 230 V/50 Hz	
	136 022	Controller, Flame	DGAI.131 F	
	136 025	Controller, Flame	DGAI 33 F/2	
	136 021	Controller, Flame	E3704/XXVI 230V	
	136 005	Controller, Flame	IFS 110 IM-3 sec 230 V	
	136 013	Transformer, Ignition repl. 136 026	ZE 30/7,5 ENR 4042575	
	136 026	Transformer, Ignition	ZE 30/7 ENR 4041661	
	119 013	Plug, Spark Type 601-602		
	119 044	Plug, Spark Type 612-613	GE 80	

Type 600-633		Spare Parts List Electrical Components		Page 9-24.4
Pos.	Part No.	Part Name	Description	Quant.
	119 045	Plug, Spark	Type 623-633 GE 120	
	119 019	Rod, Flame	Type 601-602	
	119 047	Rod, Flame, Repl. 119 046	GE 80	
	119 046	Rod, Flame	GE 120	
	135 986	Switch, Vacuum	DWL 03 A	
	135 991	Switch, Pressure	LGW 3-A2	
	135 992	Switch, Pressure gas min.	GW 50 - A2	
	119 048	Switch, Pressure gas min.		
	135 993	Switch, Pressure, gas max.	ÜB 50 - A2	
	119 100	Multiblock	Type 601 - 602 MB-DLE 405 B01	
	119 043	Multiblock	Type 612 - 613 MB-ZRDLE 405 B01	
	119 103	Multiblock (Australia only)	Type 612 - 613 MB-ZRDLE 405 B07	
	119 035	Multiblock	Type 623 - 633 MB-ZRDLE 407 B01	
	119 102	Multiblock (Australia only)	Type 623 - 633 MB-ZRDLE 407 B07	
	107 324	Motor, Control	KM 220	
	107 325	Motor, Control	SM 220	
	107 849	Motor, Control	NM 230	
	136 307	Condenser	MFB MP2/400	

Type		Spare Parts List		Page
600-633		Electrical Components		9-24.5
Pos.	Part No.	Part Name	Description	Quant.
	111 967	Valve, Solenoid	4/2 230V/50Hz	
	112 286	Vaive, Solenoid	4/2 115V/60Hz	